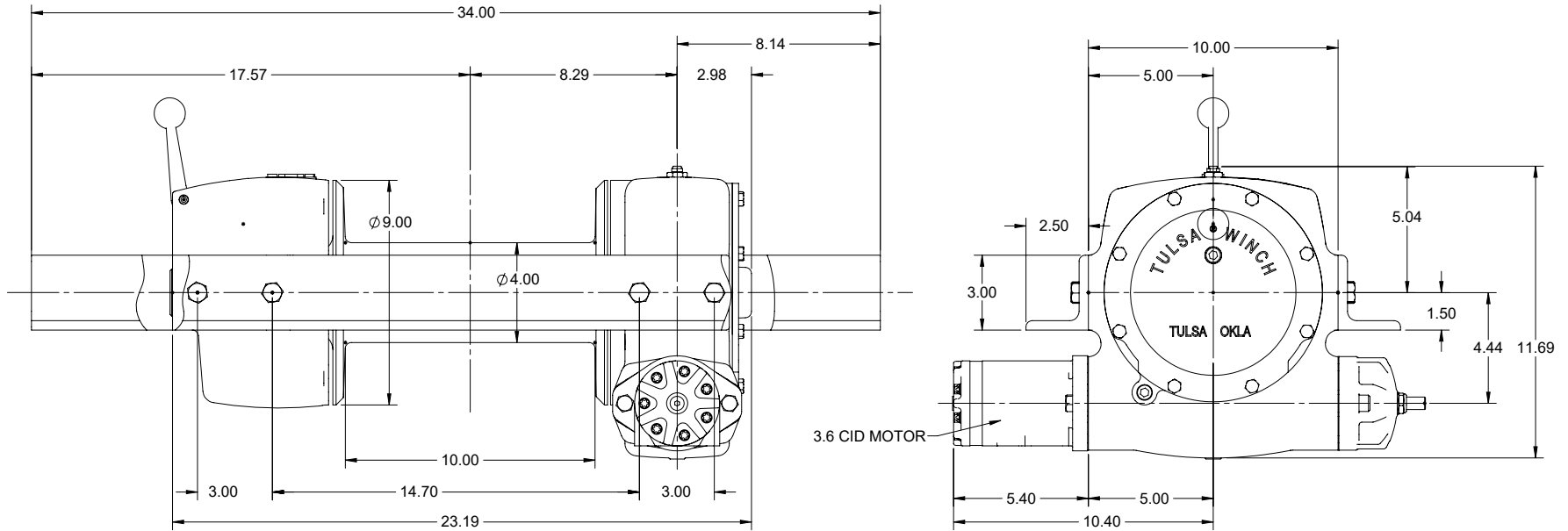


H1060



PERFORMANCE DATA - 1060	
INPUT SPEED (MAX)	1,200 RPM
INPUT TORQUE (MAX)	793 IN-LBS
DYNAMIC EFFICIENCY (GEAR BOX)	51.3 %
CABLE DIAMETER	.44
GEAR BOX RATIO	60:1

LAYER	LINEPULL POUNDS	LINESPEED FT/MIN	TOTAL CABLE FEET
1	11,000	23.2	23
2	9,188	27.8	51
3	7,889	32.4	83
4	6,911	37.0	119
5	6,149	41.6	160