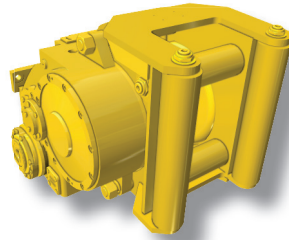
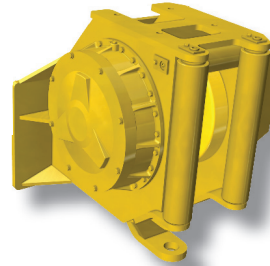


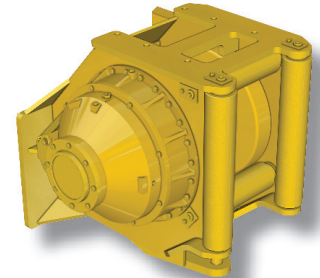
CARCO H40-H50



CARCO 50B-H60-70A-H85



CARCO H90



CARCO H110-H140

### D3K/D4K/D5K

WINCH MODEL		WINCH TYPE	MAXIMUM AVAIL HP	MAXIMUM LINE PULL		MAXIMUM LINE SPEED		RATED LINE PULL		RATED LINE SPEED		AVAILABILITY
CARCO	CAT® *			LB	KG	FPM	MPM	LB	KG	FPM	MPM	
H40E	PA40E	HYSTAT	84	40,000	18,100	132	40	40,000	18,100	49	15	NOW AVAILABLE
H50E		HYSTAT	84	50,000	22,700	105	32	50,000	22,700	39	12	CONTACT CARCO

### D6K

WINCH MODEL		WINCH TYPE	MAXIMUM AVAIL HP	MAXIMUM LINE PULL		MAXIMUM LINE SPEED		RATED LINE PULL		RATED LINE SPEED		AVAILABILITY
CARCO	CAT® *			LB	KG	FPM	MPM	LB	KG	FPM	MPM	
H50E	PA50E	HYSTAT	91	50,000	22,700	135	41	50,000	22,700	47	14	NOW AVAILABLE
H60E		HYSTAT	91	60,000	27,200	107	32	60,000	27,200	37	11	CONTACT CARCO

### D6N

WINCH MODEL		WINCH TYPE	MAXIMUM AVAIL HP	MAXIMUM LINE PULL		MAXIMUM LINE SPEED		RATED LINE PULL		RATED LINE SPEED		AVAILABILITY
CARCO	CAT® *			LB	KG	FPM	MPM	LB	KG	FPM	MPM	
50B	PA55	PTO-STD	119	69,200	31,400	147	45	36,000	16,300	97	30	NOW AVAILABLE
50B	PA55	PTO-LOW	119	69,200	31,400	61	19	50,000	22,600	40	12	NOW AVAILABLE
H60		HYD-RIPPER	71	60,000	27,200	64	19	55,000	24,900	33	10	NOW AVAILABLE
H85		HYD-RIPPER	71	85,000	38,500	41	12	85,000	38,500	21	6	CONTACT CARCO

### D6T

WINCH MODEL		WINCH TYPE	MAXIMUM AVAIL HP	MAXIMUM LINE PULL		MAXIMUM LINE SPEED		RATED LINE PULL		RATED LINE SPEED		AVAILABILITY
CARCO	CAT® *			LB	KG	FPM	MPM	LB	KG	FPM	MPM	
70A	PA56	PTO-STD	158	89,800	40,700	130	40	59,000	26,700	80	24	NOW AVAILABLE
70A	PA56	PTO-LOW	158	89,800	40,700	58	18	70,000	31,700	35	11	NOW AVAILABLE
H85		HYD-RIPPER	81	80,400	36,500	65	20	85,000	38,500	33	10	CONTACT CARCO
H85		HYD-HI PERF**	116	85,000	38,500	74	22	85,000	38,500	37	11	CONTACT CARCO
H90		HYD-HI PERF**	116	90,000	40,800	72	22	90,000	40,800	35	11	NOW AVAILABLE

\* AVAILABLE DIRECTLY FROM CATERPILLAR \*\* D6T-T3 ONLY

**WINCH PRODUCTS FOR  
CATERPILLAR®  
TRACK-TYPE TRACTORS**

**CARCO®**

**D7E**

WINCH MODEL		WINCH TYPE	MAXIMUM AVAIL HP	MAXIMUM LINE PULL		MAXIMUM LINE SPEED		RATED LINE PULL		RATED LINE SPEED		AVAILABILITY
CARCO	CAT® *			LB	KG	FPM	MPM	LB	KG	FPM	MPM	
H90	PA90	HYD	116	90,000	40,800	70	21	90,000	40,800	32	10	NOW AVAILABLE
H110		HYD	116	110,000	49,900	50	15	110,000	49,900	26	8	CONTACT CARCO

**D8T**

WINCH MODEL		WINCH TYPE	MAXIMUM AVAIL HP	MAXIMUM LINE PULL		MAXIMUM LINE SPEED		RATED LINE PULL		RATED LINE SPEED		AVAILABILITY
CARCO	CAT® *			LB	KG	FPM	MPM	LB	KG	FPM	MPM	
H140	PA140	HYD-HI PERF	122	140,000	63,500	46	14	140,000	63,500	23	7	NOW AVAILABLE
H140		HYD-RIPPER	102	140,000	63,500	38	11	140,000	63,500	19	6	NOW AVAILABLE
H200		HYD-HI PERF	122	180,000	81,600	35	10	200,000	81,600	14	4	CONTACT CARCO
H200		HYD-RIPPER	102	180,000	81,600	26	8	200,000	81,600	12	3	CONTACT CARCO

**D9T**

WINCH MODEL		WINCH TYPE	MAXIMUM AVAIL HP	MAXIMUM LINE PULL		MAXIMUM LINE SPEED		RATED LINE PULL		RATED LINE SPEED		AVAILABILITY
CARCO	CAT® *			LB	KG	FPM	MPM	LB	KG	FPM	MPM	
H140	PA140	HYD-HI PERF	132	140,000	63,500	47	14	140,000	63,500	24	7	NOW AVAILABLE
H140		HYD-RIPPER	122	140,000	63,500	39	12	140,000	63,500	18	5	NOW AVAILABLE
H200		HYD-HI PERF	132	200,000	90,700	35	10	200,000	90,700	14	4	CONTACT CARCO
H200		HYD-RIPPER	122	200,000	90,700	29	9	200,000	90,700	12	3	CONTACT CARCO

**D10T**

WINCH MODEL		WINCH TYPE	MAXIMUM AVAIL HP	MAXIMUM LINE PULL		MAXIMUM LINE SPEED		RATED LINE PULL		RATED LINE SPEED		AVAILABILITY
CARCO	CAT® *			LB	KG	FPM	MPM	LB	KG	FPM	MPM	
H200		HYD-RIPPER	87	155,000	70,300	38	11	200,000	90,700	9	3	CONTACT CARCO

**D11T**

WINCH MODEL		WINCH TYPE	MAXIMUM AVAIL HP	MAXIMUM LINE PULL		MAXIMUM LINE SPEED		RATED LINE PULL		RATED LINE SPEED		AVAILABILITY
CARCO	CAT® *			LB	KG	FPM	MPM	LB	KG	FPM	MPM	
H200		HYD-RIPPER	134	200,000	90,700	37	11	200,000	90,700	17	5	CONTACT CARCO

**NOTES:**

PTO	Winch powered mechanically from tractor's torque converter-driven mechanical rear power takeoff (PTO)
STD	Standard-speed gear ratio for balance between LINE PULL and LINE SPEED
LOW	Low-speed gear ratio maximizing LINE PULL and load control precision
HYSTAT	Winch powered by a dedicated closed-loop hydrostatic circuit
HYD	Winch operating power from tractor's implement hydraulic system
HI-PERF	Winch optimized for specialized CATERPILLAR "high-performance hydraulics for winch"
RIPPER	Requires less installation time; winch and CATERPILLAR ripper are easily interchangeable

\* AVAILABLE DIRECTLY FROM CATERPILLAR

[www.paccarwinch.com](http://www.paccarwinch.com)