



WARN Industrial Winch

Model	Part Number	Motor Type
Series 30XL-LP Hydraulic Winch Air Clutch	81617	2-Speed Hydraulic 14.9 ci (244 cc)



The Warn Series XL product line combines durable cast iron construction, high efficiency hydraulic motor, and a robust 2X rated load braking system with a permanently lubricated and hardened 2-stage planetary gear train for superior intermittent-duty performance for loads up to 30,000 lbs. Winches are also available with manual or air clutches and 2 drum widths. A roller tension plate is standard along with bi-directional operation and a variety of mounting options to fit a variety of applications.

The 2-speed winch uses a variable displacement motor activated by an electric solenoid. In high speed mode, the line speeds are doubled while pulling force is reduced by half.

Warn Series XL winches are not suitable for hoisting applications or movement of persons.

Accessories

Description:	Part Number
Fairlead SRS-XL-LONG	77869
Wire Rope Assembly 5/8"x245'	77454
Snatch Block XL-60K LB	80858

Engineering Data			
Rated Pulling Force:	30000	lbf	13608 kgf
Drum Barrel Diameter:	6.25	in	159 mm
Drum Flange Diameter:	13.50	in	343 mm
Distance Between Flanges:	14	in	356 mm
Recommended Maximum Wire Rope Diameter:	5/8	in	15.9 mm
Recommended Minimum Wire Rope Breaking Strength:	41200	lbf	18688 kgf
Approximate Shipping Weight:	355.0	lb	161.0 kg
Duty Cycle (intermittent per SAE J706 section 6.2):	1000	ft	304.8 m
Mounting Bolt Torque:	159	ft*lbf	216 N*m
Maximum Layers of Wire Rope:	5		
Gear Reduction:	36:1		
Brake Type:	Spring Applied Disk		
Contactor / Remote Type:	N/A		

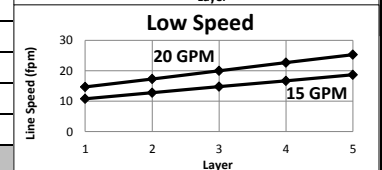
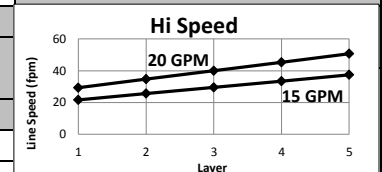
Drum Rotation

Viewed from Motor End

Standards Compliance

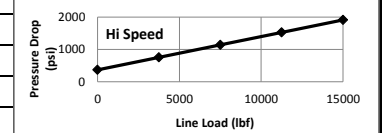
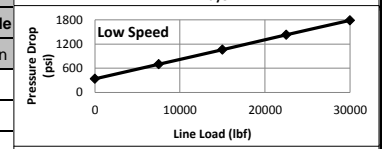
- SAE J706
- CE Machinery Directive 98/37/EC and 2006/42/EC

Performance By Layer- 5/8" (15.9 mm) dia. Rope									
Drum Layer	Line Load Hi-Speed/Low-Speed		Line Speed 15 GPM Hi-Speed/Low-Speed		Line Speed 20 GPM Hi-Speed/Low-Speed		Drum Capacity		
	lbf	kgf	ft/min	m/min	ft/min	m/min	ft	m	
1	15000 / 30000	13608 / 6804	21.6 / 10.8	6.6 / 3.3	29.3 / 14.7	8.9 / 4.5	36	11.0	
2	12692 / 25385	11514 / 5757	25.6 / 12.8	7.8 / 3.9	34.7 / 17.3	10.6 / 5.3	78	23.8	
3	11000 / 22000	9979 / 4990	29.5 / 14.8	9.0 / 4.5	40.0 / 20.0	12.2 / 6.1	127	38.7	
4	9706 / 19412	8805 / 4403	33.4 / 16.7	10.2 / 5.1	45.3 / 22.7	13.8 / 6.9	183	55.8	
5	8684 / 17368	7878 / 3939	37.4 / 18.7	11.4 / 5.7	50.7 / 25.3	15.5 / 7.8	245	74.7	



* Never exceed the Rated Pulling Force. Installation of a Rated Capacity Limiter is recommended.

First Layer Performance									
Low Speed at 20GPM				Hi Speed at 20GPM				Duty Cycle	
lbf	kgf	psi	BAR	lbf	kgf	psi	BAR	min/10min	
0	0	335	23.1	0	0	370	25.5	N/A	
7500	3402	698	48.1	3750	259	756	52.1	N/A	
15000	6804	1060	73.1	7500	517	1142	78.7	N/A	
22500	10206	1430	98.6	11250	776	1527	105.3	N/A	
30000	13608	1790	123.4	15000	1034	1913	131.9	N/A	

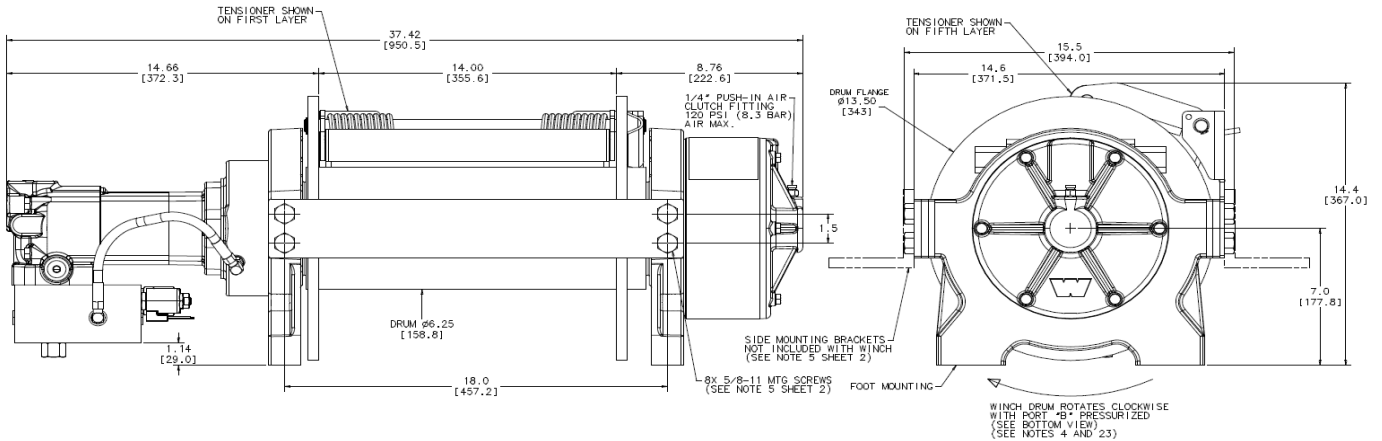


WARN INDUSTRIES, INC Industrial Products	Customer Service (North America): 1.800.543.9276 Customer Service (International): 1.503.722.3008 FAX: 1.503.722.3000 www.warn.com	12900 S.E. Capps Road, Clackamas, OR USA 97015
--	--	---



WARN Industrial Winch

Model	Part Number	Motor Type
Series 30XL-LP Hydraulic Winch Air Clutch	81617	2-Speed Hydraulic 14.9 ci (244 cc)



Motor / Contactor may be rotated in 90 degree increments. Clutch housing may be rotated in 60 degree increments.

Units are given in inches [millimeters], unless otherwise specified

Recommended Mounting- Always Observe Correct Drum Rotation			Hydraulic System Specifications		
Pull from bottom of winch	Pull from bottom of winch	Pull from top of winch	Maximum System Pressure:	3000 psi	207 BAR
			Maximum Motor Pressure Drop:	3000 psi	207 BAR
Feet down	Feet forward	Feet forward	Maximum Rated Input Flow:	20 GPM	76 LPM
Pull from top of winch	Pull from top of winch	Pull from top of winch	Control Valve Type:	3-position, 4-way, open center, spring return (motor spool)	
			Control Valve Schematic		
Feet down without angle brace	Feet down with angle brace	Angle Braces Only			
<p>Notes: Solenoid Specification: 10-14VDC, 1.75-2.5 Amp. Winch must be operated in the direction shown with Port B Pressurized. See Drum Rotation on the front page. Do not power out in high speed mode.</p>					

WARN INDUSTRIES, INC
Industrial Products

Customer Service (North America): 1.800.543.9276
Customer Service (International): 1.503.722.3008
FAX: 1.503.722.3000 www.warn.com

12900 S.E. Capps Road,
Clackamas, OR USA 97015