

HONCHO

UTV5000

1.3 HP 12V DC efficient permanent magnet motor

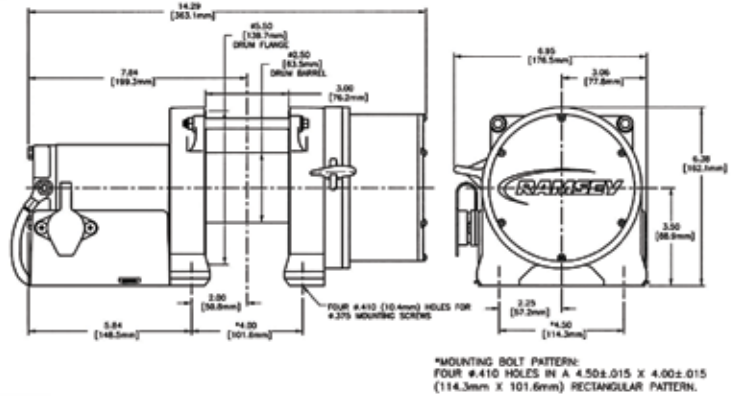


Proven and efficient three-stage planetary gear system design

Note: Fairlead does not attach directly to winch.

SPECIFICATIONS

- Rated line pull (single line) 5,000 lb (2,260 kg)
- Gear reduction ratio 294:1
- Motor Permanent magnet - 1.3 hp (12V) DC
- Overall dimensions (LxWxH) 14.29" x 6.95" x 6.38"
(363.1 mm x 176.5 mm x 162.1 mm)
- Drum size Diameter 2.5" (63 mm)
Length 3.0" (76.2 mm)
- Weight 32.6 lb
(14.8 kg winch, cable and hook)
- Cable supplied 60 ft (18.3 m) of 7/32" (5.6 mm) galvanized aircraft cable with replaceable clevis hook
- Mounting bolt pattern 4.50 ± .015 IN x 4.00 ± .015 IN
(114.3 mm x 101.6 mm)



Line Speed and Amp Draw - First Layer

Line Pull	lb	no load	1000	3000	5000
	kg		450	1350	2260
Line Speed	fpm	15	11	8	5
	mpm	4.5	3.3	2.4	1.5
Motor Current	amps	45	100	155	230

Line Pull and Cable Capacity

Layer of Cable		1	2	3	4	5	6
Rated Line Pull per Layer	lb	5000	4200	3600	3200	2800	2600
	kg	2270	1900	1630	1450	1270	1180
Cable Capacity per Layer	ft	5	15	30	40	55	60
	m	1.5	4.5	9	12.1	16.7	18.2

UTV 5000 R 12V- dash mounted toggle switch Part # 110272
R - 4-way roller fairlead