

## ATV3000



Note: Fairlead does not attach directly to winch.



Extremely strong Technora™ fiber rope with excellent heat resistance

Part # 110264  
Includes ATV 3000 with handlebar rocker switch



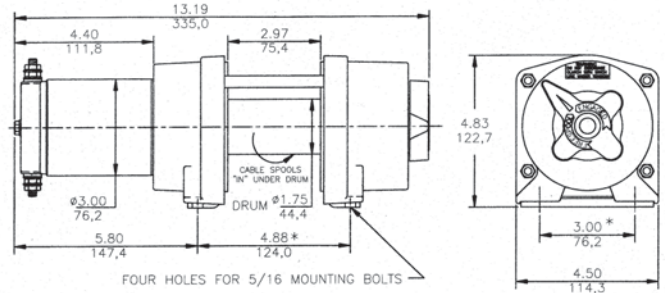
Output planetary gear system has 50% greater gear contact surface than the competition for increased strength and durability



Part # 110270 Includes ATV 3000 with wireless remote

### SPECIFICATIONS

- Rated line pull . . . . . (single line) 3,000 lb (1,360 kg)
- Gear reduction ratio . . . . . 136:1
- Motor . . . . . Permanent magnet - 0.9 hp (12V) DC
- Overall dimensions . . . . . (LxWxH) 13.19" x 4.50" x 4.83"  
(335 mm x 114 mm x 123 mm)
- Drum size . . . . . Diameter 1.75" (44 mm)  
Length 2.97" (76 mm)
- Weight . . . . . 21 lb (9.5 kg)
- Cable / Rope Supplied:**
  - Cable supplied . . . . . 50 ft (15 m) of 3/16" (4.8 mm) galvanized aircraft cable with replaceable clevis hook
  - Rope supplied . . . . . 50 ft (15 m) of 3/16" (4.8 mm) extremely strong (optional) Technora™ fiber rope with excellent heat resistance with standard 3 ft rock shield
- Mounting bolt pattern . . . . . 3.00 ± .015 IN x 4.88 ± .015 IN  
(76.2 mm x 124.0 mm)



\* MOUNTING BOLT PATTERN: FOUR  $\phi$ .34 HOLES IN A 4.88±.015 x 3.00±.015 (123.9mm x 76.2mm) RECTANGULAR PATTERN

### Line Speed and Amp Draw - First Layer

Line Pull	lb	no	500	1000	1500	2000	2500	3000
	kg	load	227	453	680	906	1133	1360
Line Speed	fpm		20.8	17.6	15	12.3	10.2	8.5
	mpm		6.3	5.3	4.5	3.8	3.0	2.6
Motor Current	amps		18	45	63	84	96	121
								150

### Line Pull and Cable Capacity

Layer of Cable		1	2	3	4	5
Rated Line	lb	3000	2500	2100	1890	1680
Pull per Layer	kg	1360	1133	952	857	761
Cable Capacity	ft	7	15	25	37	50
per Layer	m	2.12	4.56	7.6	11.3	15.2

- ATV 3000 R 12V - wireless remote . . . . . Part # 110262
- ATV 3000 R 12V - handlebar rocker switch . . . . . Part # 110264
- ATV 3000 H 12V - wireless remote, synthetic rope . . Part # 110270
- R - 4-way roller fairlead
- H - Hawse fairlead

