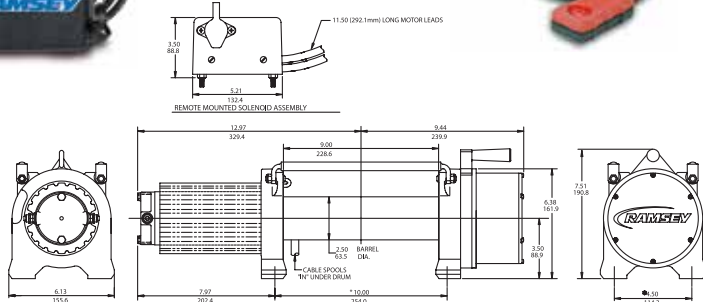
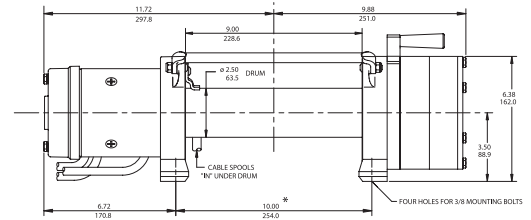


REP 8.5e



Dimensions shown are inches over millimeters

REP 9.5e



* MOUNTING BOLT PATTERN: FOUR 3/8 HOLES IN A 10.00±.015 x 4.50±.015 (254.0mm x 114.3mm) RECTANGULAR PATTERN

Product Features

- Cam action clutch disengages planetary gear system for free spooling
- Proven three-stage planetary gear system design for fast line speed
- 5 ft (1.52 m) 4-gauge battery cables with connectors on REP 8.5e
- 6 ft (1.83 m) 2 gauge battery cables with connectors on REP 9.5e
- Weather resistant solenoid assembly
- Automatic load-holding brake
- 12 ft wire pendant remote
- Limited lifetime warranty
- Hawse fairlead

Specifications

Rated line pull	8,500 lb (3,850 kg)
Gear reduction ratio	294:1
Motor	Permanent magnet (12 V)
Overall dimensions	(LxWxH) 22.41" x 6.13" x 7.45" (569.3 mm x 155.6 mm x 189.1 mm)
Drum size	Diameter 2.5" (63.5 mm) Length 9" (228.6 mm)
Weight	56 lb (25.4 kg) winch and cable
Cable supplied	95 ft (29 m) of 5/16" (8 mm) galvanized aircraft cable with replaceable clevis hook
Mounting bolt pattern	10.00 ± .015 in. x 4.50 ± .015 in. (254.0 mm x 114.3 mm)

Line Speed and Amp Draw - First Layer

Line Pull	lb	no	2000	4000	6000	8000	8500
	kg	load	900	1810	2710	3620	3850
Line Speed	fpm	15	12	10	8	6	4.5
	mpm	4.5	3.6	3.0	2.4	1.8	1.3
Motor amps @ 12 V		40	110	170	230	310	335

Line Pull and Cable Capacity

Layer of Cable		1	2	3	4
Rated Line	lb	8500	6900	5800	5100
Pull per Layer	kg	3850	3120	2630	2310
Cable Capacity per Layer	ft	15	40	70	95
	m	4	12	21	28

REP 8.5e H 12V **Part# 111073**
 REP 8.5e R 12V **Part# 111085**
 R - 4-way roller fairlead H - Hawse fairlead

Specifications

Rated line pull	9,500 lb (4,300 kg)
Gear reduction ratio	138:1
Motor	3.8 hp Series Wound (12 V)
Overall dimensions	(LxWxH) 22.43" x 6.13" x 7.45" (569.7 mm x 155.6 mm x 189.7 mm)
Drum size	Diameter 2.5" (63.5 mm) Length 9" (228.6 mm)
Weight	88 lb (39.9 kg) winch and cable
Cable supplied	95 ft (29 m) of 5/16" (8 mm) galvanized aircraft cable with replaceable clevis hook
Mounting bolt pattern	10.00 ± .015 in. x 4.50 ± .015 in. (254.0 mm x 114.3 mm)

Line Speed and Amp Draw - First Layer

Line Pull	lb	no	2000	4000	6000	8000	9500
	kg	load	900	1810	2720	3620	4309
Line Speed	fpm	30	16	11	7	5	3
	mpm	9.1	4.8	3.3	2.1	1.5	.9
Motor amps @ 12 V		94	170	250	315	370	420

Line Pull and Cable Capacity

Layer of Cable		1	2	3	4
Rated Line	lb	9500	7700	6500	5700
Pull per Layer	kg	4309	3480	2940	2580
Cable Capacity per Layer	ft	15	35	60	95
	m	4	10	18	28

REP 9.5e H 12V **Part # 111090**
 REP 9.5e R 12V **Part# 111091**
 R - 4-way roller fairlead H - Hawse fairlead