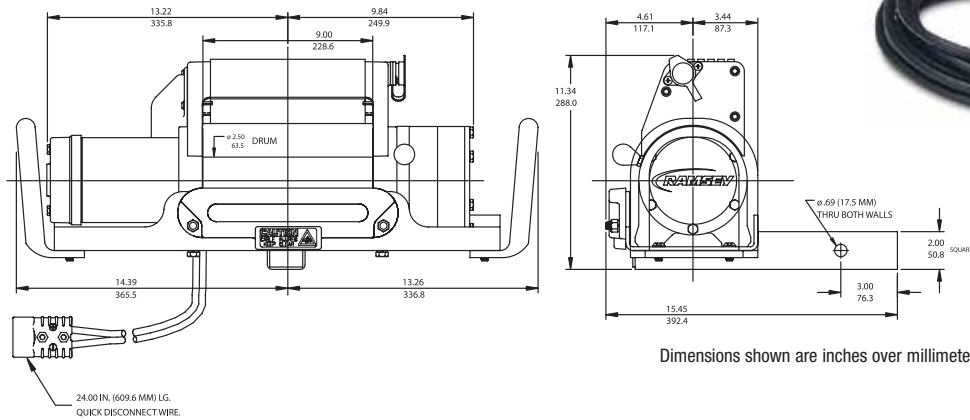


QM 9000



Product Features

- Used with a class-three rear receiver hitch with 5,000 lb minimum weight carrying (WC) rating (Receiver must not be recessed more than 1 1/4" from bumper face)*
- Proven three-stage planetary gear system design for fast line speed
- Strong automatic load-holding brake for strength
- Cam action clutch disengages planetary gear system for free spooling
- Weather resistant fully integrated solenoid assembly
- 12 ft pendant
- Anti-theft locking pin
- Hawse fairlead
- Limited lifetime warranty

*All products in the QM Series will front mount into QM Front Receivers from Ramsey Winch.

Specifications

Rated line pull (single line) 9,000 lb (4,070 kg)
 Gear reduction ratio 138:1 (12V)
 Motor Series wound - 4.4 hp 12V DC
 Overall dimensions (LxWxH) 27.77" x 14.38" x 11.14"
 (705 mm x 365 mm x 283 mm)
 Drum size Diameter 2.5" (63 mm) Length 9" (228 mm)
 Weight 115 lb (52.2 kg)
 Cable supplied 105 ft (31.8 m) of 5/16" (8 mm) galvanized aircraft cable with replaceable clevis hook with safety latch
 Mounting bolt pattern 10.00 ± .015 in. x 4.50 ± .015 in. (254,0 mm x 114,3 mm)

- QM 8000/9000 must be used with a class-three rear receiver hitch, or equivalent, with 5,000 lb minimum weight carrying (WC) rating. Receiver must not be recessed more than 1 1/4" from bumper face.
- QM 5000 will mount into any standard class-three rear receiver hitch. Receiver must not be recessed more than 1 1/4" from bumper face.

Line Speed and Amp Draw – First Layer

Line Pull	lb	kg	no load	2,000	4,000	6,000	9,000
Line Speed	fpm	mpm	29	15	11	9	7
Motor Current	amps	12V	90	190	245	315	400

Line Pull and Cable Capacity

Layer of Cable		1	2	3	4	5
Rated Line Pull per Layer	lb	9,000	7,300	6,200	5,400	4,700
	kg	4,070	3,300	2,800	2,440	2,130
Cable Capacity per Layer	ft	15	40	70	95	105
	m	4	12	21	28	32

QM 9000 12V **Part# 111040**
 QM 9000 12V (For H2 Hummer®) **Part# 111081**