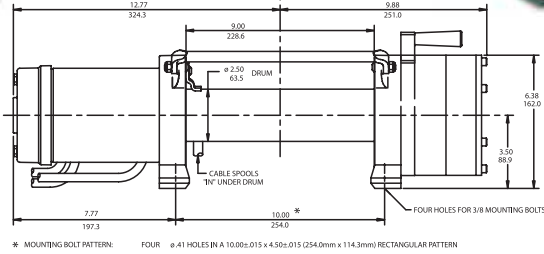
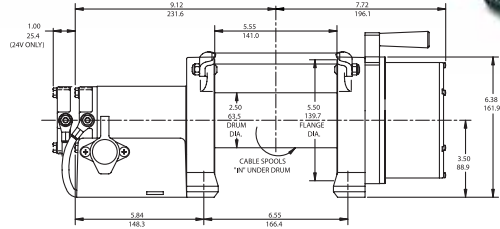


## REP 9000



## REP 5000



Note: Fairlead does not attach directly to winch. Dimensions shown are inches over millimeters.

### Product Features

- Proven three-stage planetary gear system design for fast line speed
- Motor and solenoids are grounded directly to battery
- Strong automatic load-holding brake for strength
- Cam action clutch disengages planetary gear system for free spooling
- Weather resistant solenoid assembly
- 12 ft pendant
- 6 ft (1,83 m) 2 gauge battery cables with connectors
- 4-way roller fairlead
- Limited lifetime warranty

### Specifications

Rated line pull . . . . . (single line) 9,000 lb (4,070 kg)  
 Gear reduction ratio . . . . . 138:1 (12V) (24V)  
 Motor . . . . . Series wound - 4.8 hp (12V) – 2.5 hp (24V) DC  
 Overall dimensions . . . . . (LxWxH) 22.65" x 6.12" x 6.38"  
 (575 mm x 156 mm x 162 mm)  
 Drum size . . . . . Diameter 2.5" (63 mm) Length 9" (228 mm)  
 Weight . . . . . 92 lb (41.7 kg)  
 Cable supplied . . . . . .95 ft (29 m) of 5/16" (8 mm) galvanized aircraft cable with replaceable clevis hook with safety latch  
 Mounting bolt pattern . . . . . 10.00 ± .015 in. x 4.50 ± .015 in.  
 (254,0 mm x 114,3 mm)

Note: 24V models have different dimensions. Consult factory.

### Line Speed and Amp Draw – First Layer

Line Pull	lb	kg	no load	2,000	4,000	6,000	9,000
Line Speed	fpm	12V	33	16.7	12.7	10.6	8.0
		24V	25	15	11	9	7
	mpm	12V	10.0	5.1	3.9	3.2	2.4
		24V	7.6	4.5	3.3	2.7	2.1
Motor Current	amps	12V	97	180	260	335	420
	24V	35	75	110	140	175	

### Line Pull and Cable Capacity

Layer of Cable		1	2	3	4
Rated Line Pull per Layer	lb	9,000	7,300	6,200	5,400
	kg	4,070	3,300	2,800	2,440
Cable Capacity per Layer	ft	15	40	70	95
	m	4	12	21	28

- REP 9000 R 12V . . . . . **Part# 111038**  
 REP 9000 R 24V . . . . . **Part# 110976**  
 REP 9000 R 12V CE . . . . . **Part# 111072**  
 REP 9000 R 24V CE . . . . . **Part# 111070**  
 R - 4-way roller fairlead

### Specifications

Rated line pull . . . . . (single line) 5,000 lb (2,260 kg)  
 Gear reduction ratio . . . . . 294:1 (12V) – 210:1 (24V)  
 Motor . . . . . Permanent magnet 1.3 hp (12V) – 1.9 hp (24V) DC  
 Overall dimension . . . . . (LxWxH) 16.84" x 6.00" x 6.38"  
 (428 mm x 152 mm x 162 mm)  
 Drum size . . . . . Diameter 2.5" (63 mm) Length 5.5" (140 mm)  
 Weight . . . . . 60 lb (27 kg)  
 Cable supplied . . . . . .80 ft (24 m) of 1/4" (6mm) galvanized aircraft cable with replaceable clevis hook with safety latch  
 Mounting bolt pattern . . . . . 6.55 ± .015 in. x 4.50 ± .015 in.  
 (166,4 mm x 114,3 mm)

Note: 24V models have different dimensions. Consult factory.

### Line Speed and Amp Draw – First Layer

Line Pull	lb	kg	no load	1,000	3,000	5,000
Line Speed	fpm	12V	15	11	8	5
		24V	20	17	12	8
	mpm	12V	4.5	3.3	2.4	1.5
		24V	6	5.1	3.6	2.4
Motor Current	amps	12V	45	100	155	230
	24V	20	50	105	160	

### Line Pull and Cable Capacity

Layer of Cable		1	2	3	4
Rated Line Pull per Layer	lb	5,000	4,200	3,600	3,200
	kg	2,260	1,900	1,630	1,450
Cable Capacity per Layer	ft	15	30	55	80
	m	4.5	9	17	24

- REP 5000 H 12V . . . . . **Part# 110903**  
 REP 5000 R 12V . . . . . **Part# 110904**  
 REP 5000 R 24V . . . . . **Part# 110906**  
 R - 4-way roller fairlead H - Hawse fairlead