

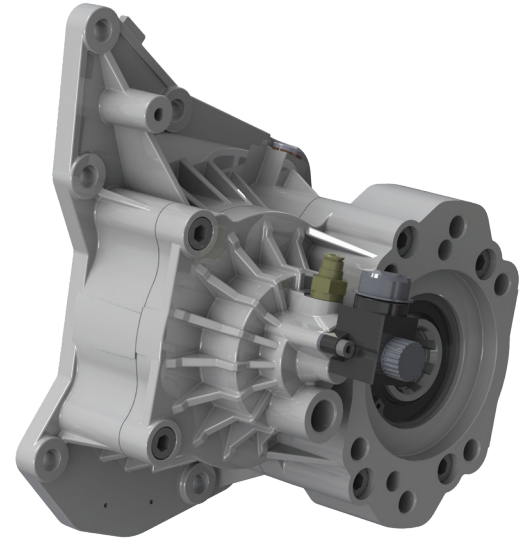
# RS6S-P89M SERIES

DETROIT DT12 TRANSMISSIONS



## STRUCTURAL SUPPORT WITH INTEGRAL HYDRAULIC MOUNT

Muncie Power's RS6S-P89M PTO is designed to fit Detroit DT12 transmissions in Freightliner or Western Star Class 8 Cascadia or 5700 trucks. The transmission requires the 362-822 Detroit power take-off prep kit option. For this unit, the main feature is the integral hydraulic mount for structural support of hydraulic pumps up to 60 lbs.\* (27 Kg.) without additional transmission support. The RS6S-P89M is capable of different ratios, several different outputs and the ability to mount larger displacement pumps.



## KEY FEATURES

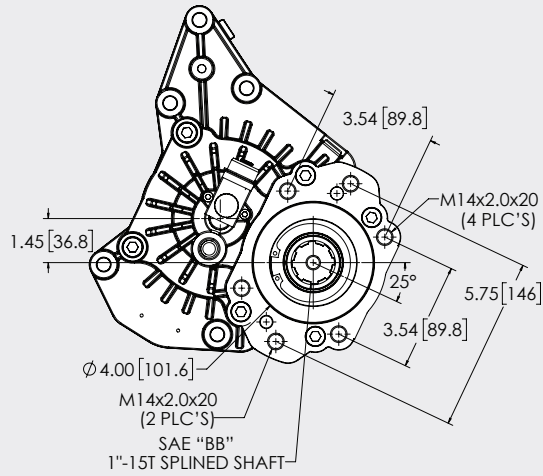
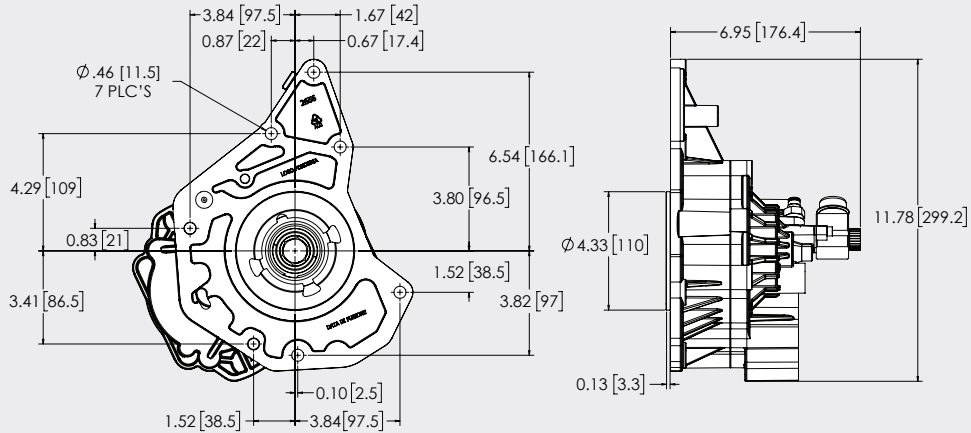
- Fits Detroit DT12 transmission
- Solenoid-activated, mechanical shift
- Available with direct mount or companion flange output options
- Takes advantage of full torque capacity of transmission
- Will allow for larger pumps without support\*  
\*Bending moment limit of 29.5 ft.lb. max.

## PTO TORQUE & HORSEPOWER RATINGS

MODEL	MAX TORQUE	MAX HORSEPOWER @ 1,000 RPM	OUTPUTS	INTERNAL RATIO
RS6S-P89M1-P1PX	317 lbs.ft. (430 Nm)	60 (45 kW)	SAE "BB" or 1410 Companion Flange	0.97
RS6S-P89M2-P1PX	317 lbs.ft. (430 Nm)	60 (45 kW)	SAE "BB" or 1410 Companion Flange	1.32
Optional Add-On Reduction Box: GB1P-205-125A	200 lbs.ft. (270 Nm)	38 (28 kW)	1¼" Round 5/16" kW Mounts To SAE "BB" Output PTO	.49

Approximate Weight: 23 lbs. (10.4 Kg.)

# DIMENSIONS



# MODEL NUMBER CONSTRUCTION

## RS6S-P89-M1-P-1-P-X

### Model

RS6S – Rear Mount 6-Bolt

### Transmission Gear

P89 – PTO Base Model

### Ratio

M1 – 1:0.97 Internal Ratio

M2 – 1:1.32 Internal Ratio

M3 – 1:1.83 Internal Ratio

### Shift Type

P – Electric/Air Shift 12v – (Integral Solenoid)

### Special Features

X – None

### Output Type

C – 1310 Companion Flange  
(Add-on Kit: 197KFL10300)

D – 1410 Companion Flange  
(Add-on Kit: 197KFL10400)

P – SAE "BB" 2- & 4-Bolt – 1"-15T Spline

### Assembly Arrangement

1 – Standard Rear Mounting