

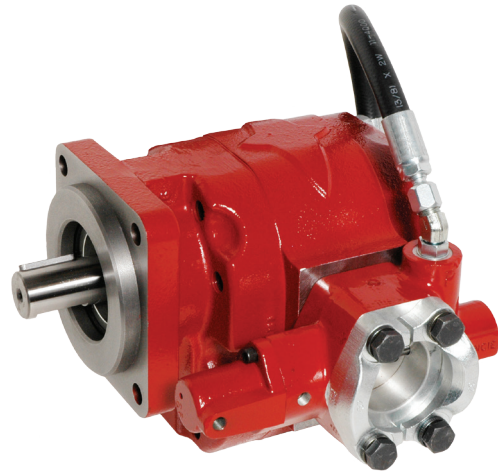
POWER-PRO/ POWER-MISER

DRY VALVE PUMPS



ON DEMAND LIVE POWER HYDRAULICS

This on-demand live power hydraulic system is ready to work with a single flip of the switch. The pump can be driven by either the engine crankshaft or PTO and contains no clutches or gears to engage or disengage, thus providing increased productivity for all solid waste packers and other mobile power applications.



KEY FEATURES

- Lower operating costs are achieved when system is operated in off mode
- Reduced system heat
- Easy, dash-mounted control
- System matched components assure a proper operating system with long lasting performance
- Pressures up to 3,000 PSI
- Speeds up to 3,000 RPM
- Direct inline inlet hose routing
- Internal porting for easy hookup

L SERIES PUMP SPECIFICATIONS

MODEL NUMBER	DISPLACEMENT IN ³ (CC)	MAX* RPM	MIN* RPM	MAX PSI (BAR)	MAX OFF PSI (BAR)	INLET PORT SAE 4-BOLT	OUTLET PORT SAE 4-BOLT	MAX INLET VACUUM
PL 14	3.18 (52)	3,000*	800	3,000 (207)	20 (1.4)	1½"	1"	5IN.HG.(.17 BAR)
PL 19	4.46 (73)	3,000*	800	3,000 (207)	20 (1.4)	1½"	1¼"	5IN.HG.(.17 BAR)
PL 23	5.20 (85)	3,000	800	2,500 (172)	20 (1.4)	1½"	1¼"	5IN.HG.(.17 BAR)
PL 25	5.73 (93)	2,500	800	2,500 (172)	20 (1.4)	1½"	1¼"	5IN.HG.(.17 BAR)

* Power-Miser Only: Pump Inlet Port is 1¼", but the Power-Miser Valve Block Inlet Port is 1½".

M SERIES PUMP SPECIFICATIONS

MODEL NUMBER	DISPLACEMENT IN ³ (CC)	MAX* RPM	MIN* RPM	MAX PSI (BAR)	MAX OFF PSI (BAR)	INLET PORT SAE 4-BOLT	OUTLET PORT SAE 4-BOLT	MAX INLET VACUUM
PM 27	6.10 (100)	3,000*	800	3,000 (207)	20 (1.4)	1½"	1¼"	5IN.HG.(.17 BAR)
PM 31	7.11 (117)	3,000	800	3,000 (207)	20 (1.4)	1½"	1¼"	5IN.HG.(.17 BAR)
PM 35	8.20 (134)	3,000	800	2,500 (172)	20 (1.4)	2"	1¼"	5IN.HG.(.17 BAR)
PM 40	9.27 (152)	2,500	800	2,500 (172)	20 (1.4)	2"	1¼"	5IN.HG.(.17 BAR)

* Off-Mode RPM. 2,500 RPM for On-Mode, except PL 25 and PM 40 which is 2,300 RPM.

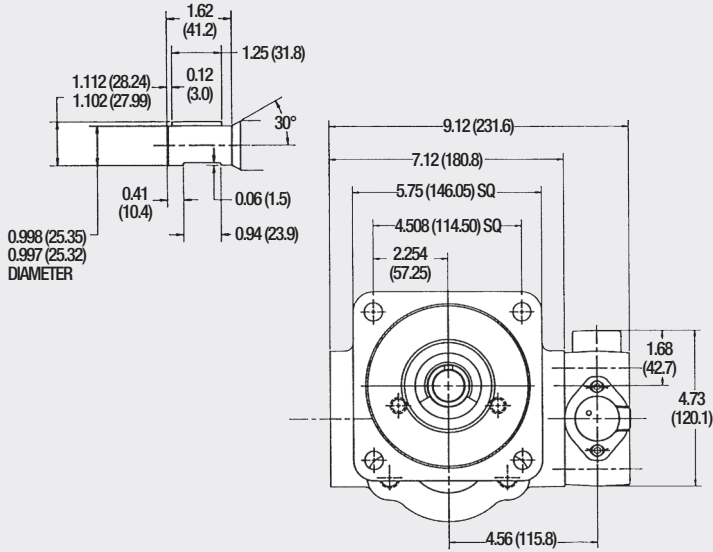
Note: Maximum oil temperature is 200°F (93°C). Never use Teflon Tape on pipe ports. 10 Micron Filtration Recommended.

Approximate Weights: 49-89 lbs. (22.2-40.4 Kg.)

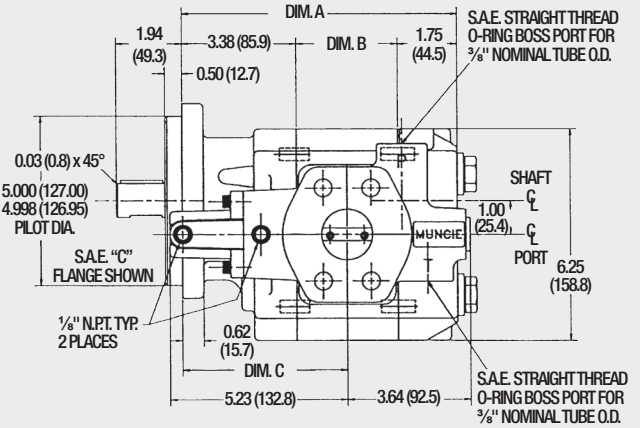
POWR-PRO INSTALLATION DIMENSIONS

L Series

Shaft Type 1



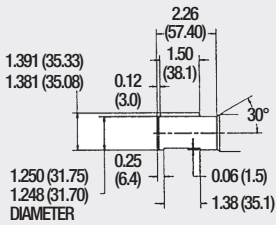
MODEL NUMBER	DIM. A IN (MM)	DIM. B IN (MM)	DIM. C IN (MM)
PL 19	7.62 (193.5)	2.50 (63.5)	4.62 (117.3)
PL 23	7.87 (199.9)	2.75 (69.9)	4.75 (120.7)
PL 25	8.12 (206.2)	3.00 (76.2)	4.88 (124.0)



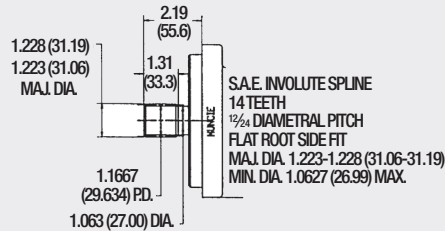
CCW Rotation shown
SAE "C" 4-BOLT

M Series

Shaft Type 7

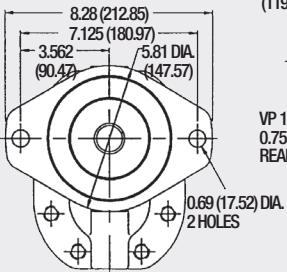


Shaft Type 5

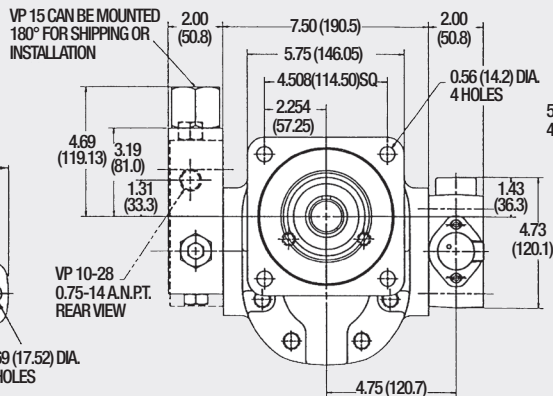


MODEL NUMBER	DIM. A IN (MM)	DIM. B IN (MM)	DIM. C IN (MM)
PM 27	8.25 (209.6)	2.50 (63.5)	5.00 (127.0)
PM 31	8.50 (215.9)	2.75 (69.9)	5.12 (130.0)
PM 35	8.75 (222.3)	3.00 (76.2)	5.25 (133.4)
PM 40	9.00 (228.6)	3.25 (82.6)	5.38 (136.7)

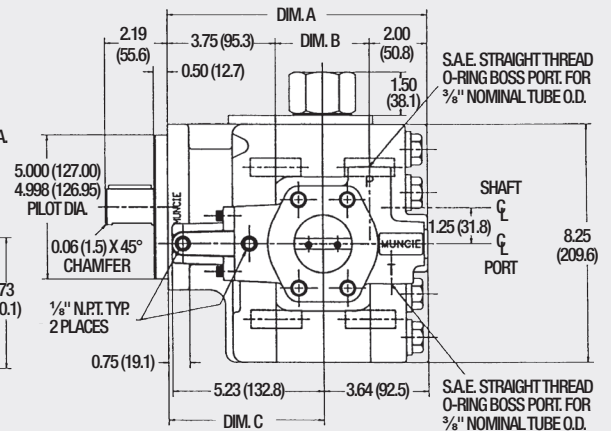
OPTIONAL FRONT COVER



SAE "C" 4-BOLT

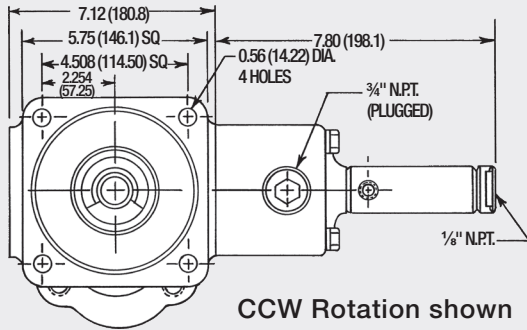


CCW Rotation shown
SAE "C" 4-BOLT

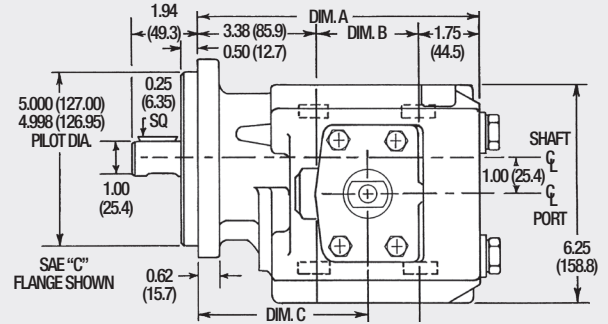


POWER-MISER INSTALLATION DIMENSIONS

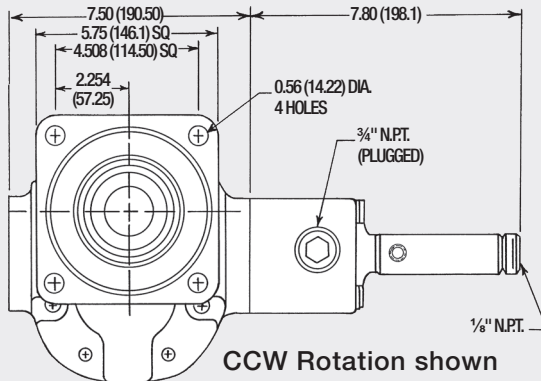
L Series



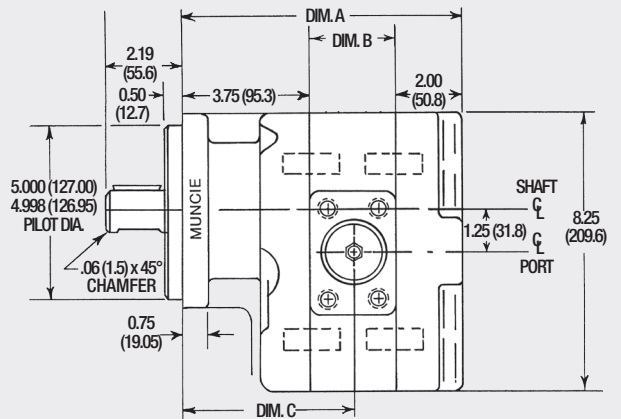
MODEL NUMBER	DIM. A IN (MM)	DIM. B IN (MM)	DIM. C IN (MM)
PL 14	7.12 (180.8)	2.00 (50.8)	4.38 (111.3)
PL 19	7.62 (193.5)	2.50 (63.5)	4.62 (117.3)
PL 23	7.87 (199.9)	2.75 (69.9)	4.75 (120.7)
PL 25	8.12 (206.2)	3.00 (76.2)	4.88 (124.0)



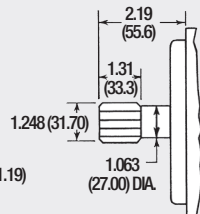
M Series



MODEL NUMBER	DIM. A IN (MM)	DIM. B IN (MM)	DIM. C IN (MM)
PM 27	8.25 (209.6)	2.50 (63.5)	5.00 (127.0)
PM 31	8.50 (215.9)	2.75 (69.9)	5.12 (130.0)
PM 35	8.75 (222.3)	3.00 (76.2)	5.25 (133.4)
PM 40	9.00 (228.6)	3.25 (82.6)	5.38 (136.7)

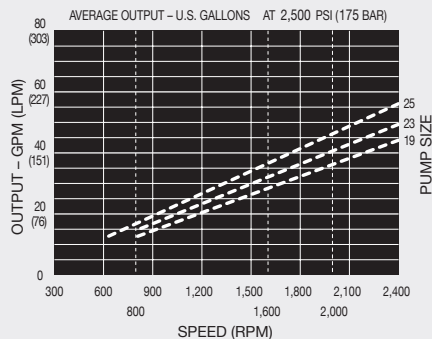


SAE INVOLUTE SPLINE
14 TEETH
1/24 DIAMETRAL PITCH
FLAT ROOT SIDE FIT
MAJ. DIA. 1.223-1.228 (31.06-31.19)
MIN. DIA. 1.0627 (26.99) MAX.

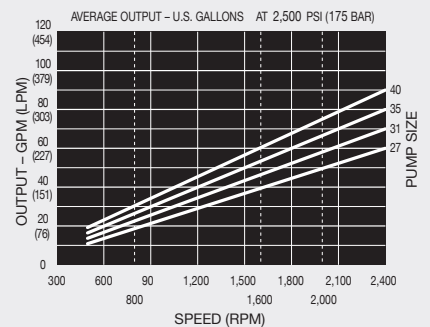


PUMP OUTPUT

L Series Pump



M Series Pump



MODEL NUMBER CONSTRUCTION

PM40 - 07 C F S L - M - A - 00 - B

Pump Model

PL14 (not available w/PPV)
 PL19
 PL23 For Replacement Pump Only
 PL25 Pump Prefix is:
 PM27 PML1 or PMM1
 PM31 (Delete model coding after Rotation)
 PM35
 PM40

Shaft

01—1.0" Rd. (25.4 mm) (L Only)
 05—1.25" 14T (31.8 mm) (M Only)
 07—1.25" Rd. (31.8 mm) (L23 & M Only)

Mounting Flange

C—SAE "C" 4-BOLT
 L—SAE "C" 2-BOLT (M only)

Port Type

F—SAE 4-BOLT

Port Location

S—SIDE

Bleed Valve*

A — No Bleed Valve
 B — 2 GPM (8 LPM)*

Options

00 — No Option

Hose Kit

A — No Hose Kit
 H — For PPV Only

Power-pro(P)/Power-Miser(M) valve

P — PPV-2402 — PM27, PM31,
 PL19, PL23, PL25
 P — PPV-3202 — PM35, PM40
 M — PMV-20 — PL14
 M — PMV-24 — PM27, PM31,
 PL19, PL23, PL25
 M — PMV-32 — PM35, PM40

Rotation

L — Left Hand (CCW)
 R — Right Hand (CW)

Contact Muncie Sales for the correct selection for your application.

*Power-Miser Only: A bleed valve must always be installed to prevent premature pump failure. Part Number FFC-3-2 (not used on PPV).

Note: Vehicle must be equipped with an air system. POWR-PRO valve must be shifted with a 2-position, 4-way valve.

OIL RECOMMENDATIONS

Muncie does not promote specific manufacturers' brands of oil. Recommendations below are guidelines; consult oil manufacturer for exact application needs.

- Viscosity Range:

Viscosity Minimum: 50-60 SUS (7.5-10.5 cST)

Viscosity Optimum Continuous: 60-100 SUS (10.5-21.6 cST)

Viscosity Maximum @ Startup: 7,500 SUS (1,600 cST)

Viscosity Index: 90 Minimum

- Aniline Point: 175 Minimum

- Pour Point: 15°F (-10°C) Maximum

- Foam Resistance: Recommended

- Rust Resistance Inhibitors: Recommended

- Corrosion Resistance: Recommended

- Oxidation Stability: Recommended

- Anti-Wear Additive: .06% Zinc Minimum*

Note: Cold weather operation requires special oil considerations. Viscosity should not exceed 7,500 SUS (1,600 cST) at lowest startup temperature. Continuous operation should range between 60-100 SUS (10.5-21.6 cST) for all temperature ranges. Never use diesel fuel or kerosene to thin oil.

*Anti-Wear Additives are optional. Typical not required for gear pump or gear motor anti-wear, but some motor manufacturers may recommend.



Member of the Interpump Group
 MP15-38 (Rev. 09-17)

201 East Jackson Street • Muncie, Indiana 47305
 800-367-7867 • Fax 765-284-6991 • info@munciepower.com • www.munciepower.com

Specifications are subject to change without notice. Visit www.munciepower.com for warranties and literature. All rights reserved. © Muncie Power Products, Inc. (2009)