

4. Performance Data, Dimensions, Order Codes

Motor

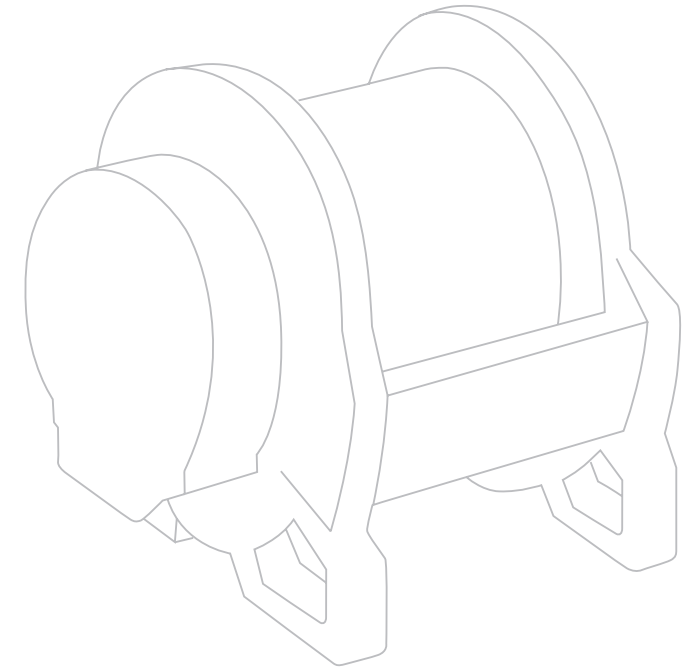
	motor P040		motor P049	
maximum pressure	4100 psi	280 bar*	4700 psi	320 bar*
maximum return flow pressure	200 psi	14 bar	200 psi	14 bar
maximum back pressure	60 psi	4 bar	75 psi	5 bar
maximum pressure drain line	25 psi	1,7 bar	25 psi	1,7 bar
maximum oil flow	27 USGPM	100 l/min	32 USGPM	120 l/min
minimum oil flow	6 USGPM	20 l/min	3 USGPM	11 l/min
weight (drum 309)	421 lbs	191 kg	421 lbs	191 kg

*including 10 bar return flow pressure allowance.
For other return flow pressure values adjust maximum pressure accordingly.
For other motor variants, please refer to factory.

Drum

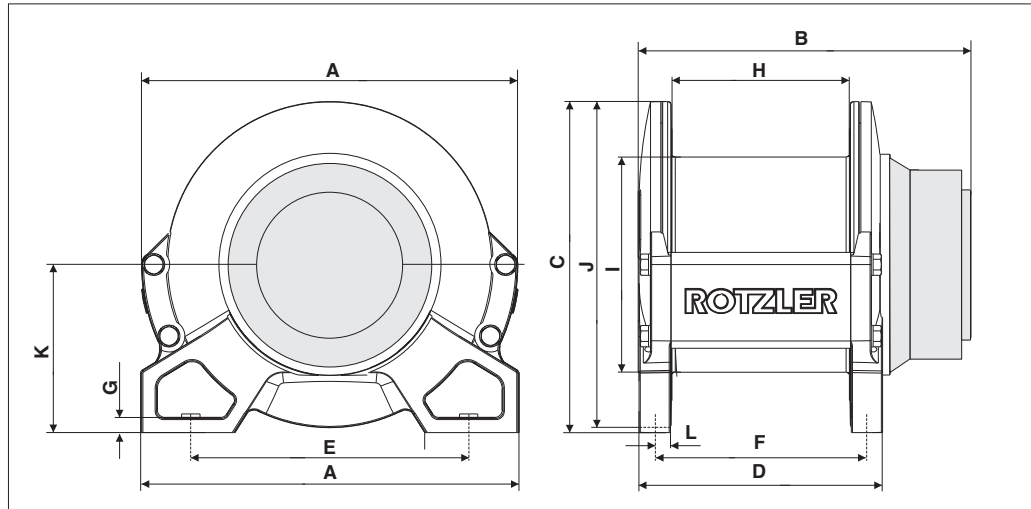
DRUM options		motor P040 / standard drum					motor P049 / standard drum			
rope diameter range		3/8" - 5/8" / 10 - 16 mm					3/8" - 5/8" / 10 - 16 mm			
data based on rope diameter		9/16" / 14 mm					5/8" / 16 mm			
rope layer		1	2	3	4	5	1	2	3	4
max. hoisting force	lbs	9200	8400	7700	7100	6700	13000	11700	10600	9800
	kN	41	37	34	32	29	57	52	47	43
max. rope speed	ft/min	144	158	172	186	206	144	159	175	191
	m/min	44	48	52	56	62	44	49	54	58
accumulated rope storage	ft	63	132	206	286	371	56	117	183	255
	m	19	40	63	87	113	17	35	55	77

DRUM groove options		motor P040 / standard drum				motor P049 / standard drum		
data based on rope diameter		14 mm				16 mm		
rope layer		1	2	3	4	1	2	3
max. hoisting force	lbs	8700	8000	7400	6800	12300	11100	10200
	kN	39	35	33	30	54	49	45
max. rope speed	ft/min	152	166	179	193	152	167	183
	m/min	46	50	54	59	46	51	55
accumulated rope storage	ft	65	136	211	292	56	117	183
	m	20	41	64	89	17	35	55

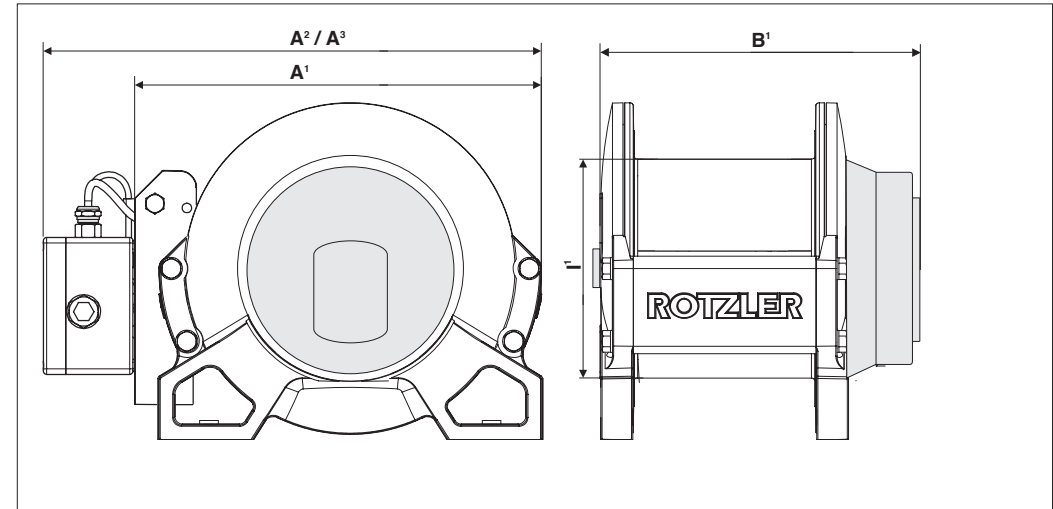


4. Performance Data, Dimensions, Order Codes

Dimensions basic



... with options and accessories



motor P040/49 / standard drum	A	A ¹	A ²	A ³	B	B ¹	C	D	E	F	G	H	I	I ¹	J	K	L
dimensions imperial – inches	19.9	20.4	23.5	22.6	20.1	20.5	17.1	15.6	14.2	13.8	0.8	12.2	11	11.7	16.7	8.6	0.8
dimensions metric – mm	max. 505	max. 517	max. 597	max. 575	max. 510	max. 520	max. 433	395	360.7	351.5	20.4	309.4	279.4	295.4	423.4	218	20.3

A¹ = with MCD 1 / pressure roller

A² = with MCD step 2 or 3

A³ = with MCD step 4 or 5

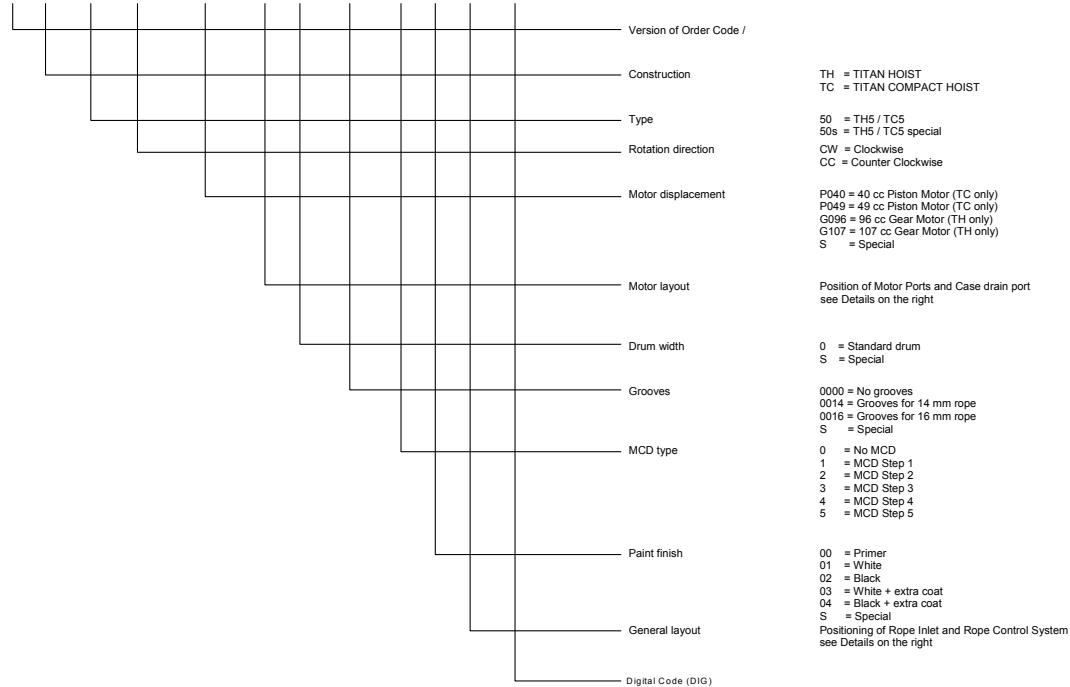
B¹ = with MCD step 2, 3, 4 or 5

I¹ = with grooves

4. Performance Data, Dimensions, Order Codes

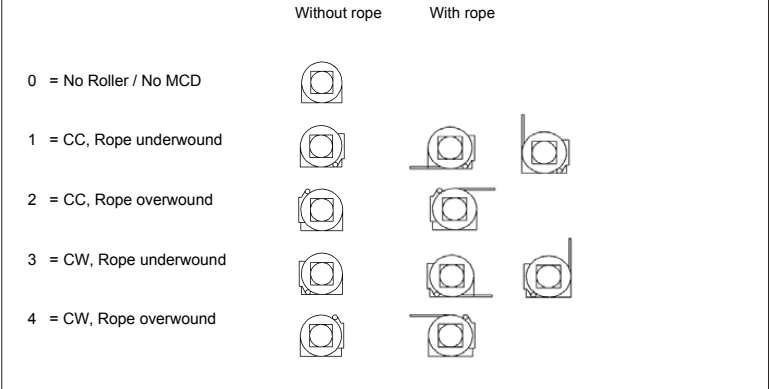
Order code

2.TC.50.CC.P049.00.0.0000.0.00.0.DIG

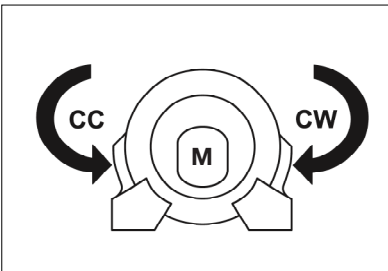
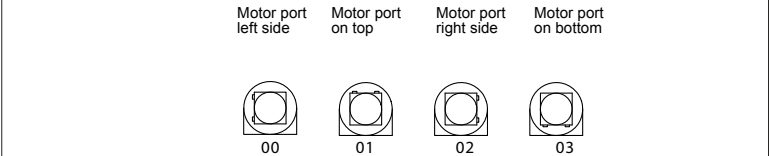


Binary Code	parameter
1	0 Without Counterbalance Valve
	1 With Counterbalance Valve (TC only)
2	0 Standard fasteners
	1 Stainless fasteners
4	0 Without Pressure Roller
	1 With Pressure Roller
8	0 Without External Brake Release
	1 With External Brake Release (TC)
16	0 Without External Brake Release
	1 With External Brake Release (TH)
32	0 With gear oil
	1 Without gear oil
:	:

General Layout



Motor Layout TITAN TC



cc = counter clockwise
cw = clockwise
M = motor