

The BD12A Digger Drive is an exciting addition to the BRADEN family of utility products, known for superior performance and durability. The powerful planetary drive system is engineered for maximum productivity with minimal noise, vibration, and operator fatigue. Precision-manufactured gears provide long life in the toughest applications.

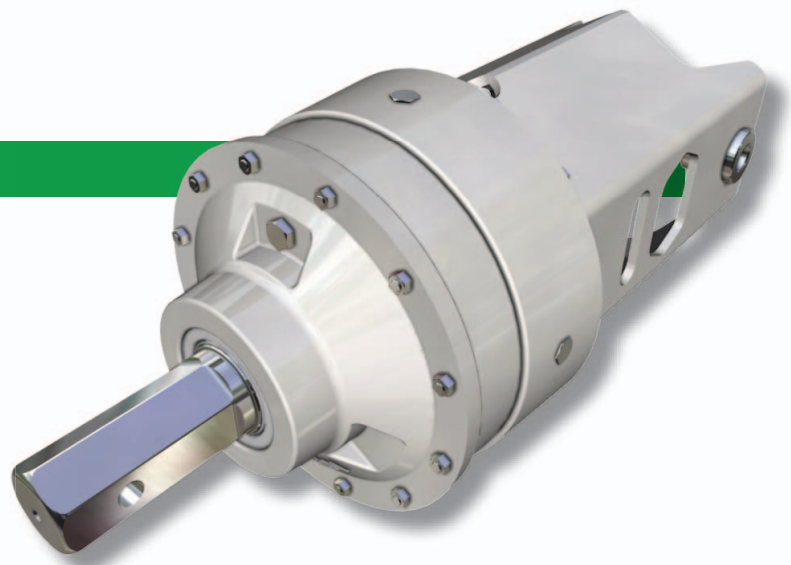
Features/Benefits

- Internal-shift piston
- Two-speed “stop and shift” gearbox
- Compatible w/common digger derrick configurations for easy retrofit/replacement
- Adjustment-free operation
- Low-noise/low-vibration
- Low-cost operation
- Heavy-duty gearing for maximum reliability



Options

- Available with 6.4 or 5.1 cu in. (105 or 84 cc) gear motors



BD12A DIGGER DRIVE

12,000 lb-ft (16,270 N·m)



Performance & Specifications

Rating: 12,000 ft lb (16,270 N·m)

Ratio, 5.1 cu-in. (84 cc) motor: 70.04:1 low speed/17.14:1 high speed

Ratio, 6.4 cu-in. (105 cc) motor: 70.50:1 low speed/19.95:1 high speed

Motor mount: SAE 'C' 2-bolt

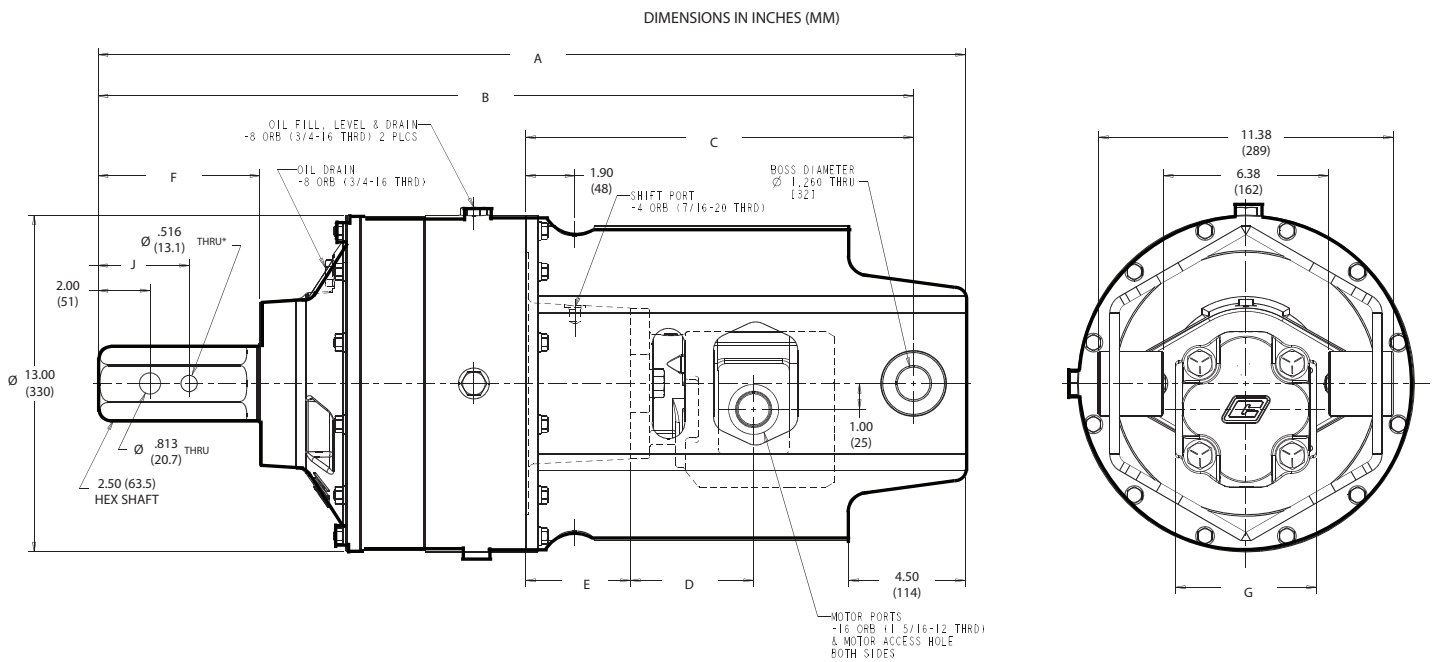
System pressure: 2,950 psi (203 bar) MAX

Shift pressure: hydraulic/air –150 psi (10.3 bar) MIN/600 psi (41.4) bar MAX

Output shaft options: 2.5 in. (63.5 mm) or 2.63 in. (66.8 mm)

Oil capacity: 8.5 pints (4.0 liters)

Dimensions



MOTOR cu-in. (cc)	A	B	C	D	E	F	G	H	J*
5.1 (84)	31.47 (799)	29.47 (748)	13.47 (342)	3.77 (96)	4.04 (103)	5.74 (146)	5.44 (138)	2.50 (63.5)	—
6.4 (105)	33.47 (850)	31.47 (799)	14.97 (380)	5.01 (127)	4.05 (103)	6.24 (158)	6.75 (171)	2.63 (66.8)	3.50 (89)

* 6.4 CU-IN. MODEL ONLY