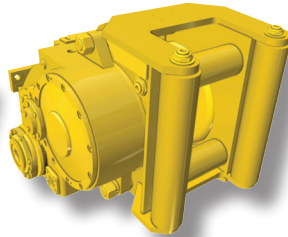
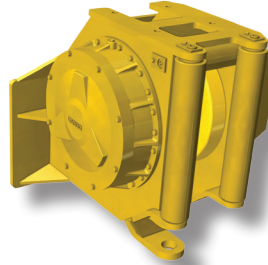


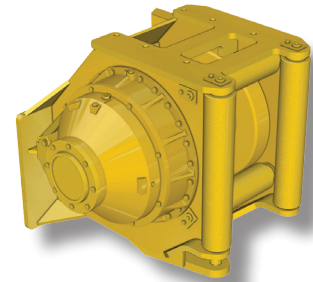
CARCO H40-H50



CARCO 50B-H60-70A-H85



CARCO H90



CARCO H110-H140

WINCH MODEL	WINCH TYPE	MAX AVAIL HP	BARE DRUM MAX LINE PULL		BARE DRUM MAX LINE SPEED		BARE DRUM RATED LINE PULL		BARE DRUM RATED LINE SPEED		AVAIL-ABILITY	MAX RATED WIRE ROPE DIAMETER	MAX THEORETICAL WIRE ROPE CAPACITY ¹			MAX RATED WIRE ROPE CAPACITY ²	
-------------	------------	--------------	-------------------------	--	--------------------------	--	---------------------------	--	----------------------------	--	---------------	------------------------------	---	--	--	---	--

450J/550J/650J - 450K/550K/650K

CARCO			LB	KG	FPM	MPM	LB	KG	FPM	MPM		IN.	FT	M	FT	M
H40	HYSTAT	81	40,000	18,140	145	44	40,000	18,140	49	15	NOW	3/4	264	80	180	55
H50	HYSTAT	81	50,000	22,670	116	35	50,000	22,670	39	12	NOW	7/8	220	67	183	56

700J-700K

CARCO			LB	KG	FPM	MPM	LB	KG	FPM	MPM		IN.	FT	M	FT	M
50B	PTO-STD	125	54,000	24,490	91	28	46,600	21,130	83	25	NOW	7/8	281	86	180	55
50B	PTO-LOW	125	69,200	31,380	54	16	50,000	22,670	49	15	NOW	7/8	281	86	180	55
H50	HYSTAT	94	50,000	22,670	135	41	50,000	22,670	42	13	NOW	7/8	220	67	183	56
H60	HYSTAT	94	60,000	27,200	120	36	60,000	27,200	35	10	*	1	218	66	163	50
H85	HYSTAT	94	85,000	38,500	125	26	85,000	38,500	24	7	*	1	218	66	163	50

750J

CARCO			LB	KG	FPM	MPM	LB	KG	FPM	MPM		IN.	FT	M	FT	M
H60	HYD-RIPPER	78	60,000	27,200	67	20	60,000	27,200	35	10	*	1	218	66	163	50
H60	HYD-HI PERF	116	60,000	27,200	100	30	60,000	27,200	52	16	NOW	1	218	66	163	50
H85	HYD-RIPPER	78	85,000	38,500	56	17	85,000	38,500	28	8	NOW	1	218	66	163	50
H85	HYD-HI PERF	116	85,000	38,500	81	25	85,000	38,500	33	10	NOW	1	218	66	163	50
H90	HYD- HI PERF	116	90,000	40,820	70	21	90,000	40,820	35	10	NOW	1-1/8	180	55	128	39

750K

CARCO			LB	KG	FPM	MPM	LB	KG	FPM	MPM		IN.	FT	M	FT	M
H60	HYD-RIPPER	78	60,000	27,200	67	20	60,000	27,200	35	10	NOW	1	218	66	163	50
H60	HYD-HI PERF	116	60,000	27,200	100	30	60,000	27,200	38	11	NOW	1	218	66	163	50
H60	HYSTAT	140	60,000	27,200	131	40	60,000	27,200	49	15	*	1	218	66	163	50
H85	HYD-RIPPER	78	85,000	38,500	56	17	85,000	38,500	22	8	NOW	1	218	66	163	50
H85	HYD-HI PERF	116	85,000	38,500	81	25	85,000	38,500	33	10	NOW	1	218	66	163	50
H85	HYSTAT	197	85,000	38,500	104	31	85,000	38,500	36	11	*	1	218	66	163	50
H90	HYD- HI PERF	116	90,000	40,820	70	21	90,000	40,820	35	10	NOW	1-1/8	180	55	128	39
H110B	HYD- HI PERF	116	110,000	49,900	54	16	110,000	49,900	27	8	NOW	1-1/4	207	63	119	36

* CONTACT CARCO

¹ Maximum theoretical wire rope capacity is per industry standard SAE J1158. NOT RECOMMENDED for actual field use.

² Maximum recommended wire rope capacity is per industry standard SAE J706 using K=0.9.

WINCH PRODUCTS FOR JOHN DEERE® CRAWLER DOZERS

CARCO®

WINCH MODEL	WINCH TYPE	MAX AVAIL HP	BARE DRUM MAX LINE PULL		BARE DRUM MAX LINE SPEED		BARE DRUM RATED LINE PULL		BARE DRUM RATED LINE SPEED		AVAILABILITY	MAX RATED WIRE ROPE DIAMETER	MAX THEORETICAL WIRE ROPE CAPACITY 1			MAX RATED WIRE ROPE CAPACITY 2	
-------------	------------	--------------	-------------------------	--	--------------------------	--	---------------------------	--	----------------------------	--	--------------	------------------------------	--------------------------------------	--	--	--------------------------------	--

850J

CARCO			LB	KG	FPM	MPM	LB	KG	FPM	MPM		IN.	FT	M	FT	M
H85	HYD-RIPPER	97	85,000	38,500	69	21	85,000	38,500	27	8	NOW	1	218	66	163	50
H85	HYD-HI PERF	116	85,000	38,500	81	25	85,000	38,500	33	10	NOW	1	218	66	163	50
H90	HYD-HI PERF	116	90,000	40,820	70	21	90,000	40,820	35	10	NOW	1-1/8	180	55	128	39
H110B	HYD-HI PERF	116	110,000	49,900	54	16	110,000	49,900	27	8	NOW	1-1/4	207	63	119	36

850K

CARCO			LB	KG	FPM	MPM	LB	KG	FPM	MPM		IN.	FT	M	FT	M
70A	PTO-STD	205	75,100	35,050	96	29	69,400	31,480	83	25	*	1	218	66	163	50
70A	PTO-SLOW	205	89,800	40,700	54	16	70,000	31,750	46	14	*	1	218	66	163	50
H85	HYD-RIPPER	97	85,000	38,500	69	21	85,000	38,500	33	10	NOW	1	218	66	163	50
H85	HYD-HI PERF	116	85,000	38,500	81	25	85,000	38,500	33	10	NOW	1	218	66	163	50
H85	HYSTAT	197	85,000	38,500	104	31	85,000	38,500	52	16	NOW	1	218	66	163	50
H90	HYD-HI PERF	116	90,000	40,820	70	21	90,000	40,820	35	10	NOW	1-1/8	180	55	128	39
H110B	HYD-RIPPER	97	110,000	49,900	46	14	110,000	49,900	22	6	*	1-1/4	207	63	119	36
H110B	HYD-HI PERF	116	110,000	49,900	54	16	110,000	49,900	27	8	NOW	1-1/4	207	63	119	36
H110B	HYSTAT	197	110,000	49,900	78	24	110,000	49,900	43	13	*	1-1/4	207	63	119	36
H140	HYD-RIPPER	97	140,000	63,530	35	10	140,000	63,530	17	5	*	1-1/4	207	63	119	36
H140	HYD-HI PERF	197	140,000	63,530	42	13	140,000	63,530	21	6	NOW	1-1/4	207	63	119	36
H140	HYSTAT	165	140,000	63,530	49	15	140,000	63,530	27	8	NOW	1-1/4	207	63	119	36

950J/950K-1050J/1050K

CARCO			LB	KG	FPM	MPM	LB	KG	FPM	MPM		IN.	FT	M	FT	M
H110B	HYD-HI PERF	144	110,000	49,900	62	19	110,000	49,900	34	10	NOW	1-1/4	207	63	119	36
H140	HYD-HI PERF	144	140,000	63,530	48	14	140,000	63,530	26	8	NOW	1-1/4	207	63	119	36

NOTES:

PTO	Winch powered mechanically from tractor's torque converter-driven mechanical rear power takeoff (PTO). Requires John Deere "Hydraulic Pump for use with Direct Drive Winch".
STD	Standard-speed gear ratio for balance between LINE PULL and LINE SPEED
LOW	Low-speed gear ratio maximizing LINE PULL and load control precision
HYSTAT	Winch powered by a dedicated closed-loop hydrostatic circuit. Winch kit includes hydrostatic pump and associated plumbing.
HYD	Winch operating power from tractor's implement hydraulic system
HI-PERF	Winch optimized for specialized JOHN DEERE "High Flow Hydraulics for Hydraulic Winch" (750/850) or "Winch Ready Conversion" (950/1050).
RIPPER	Winch optimized for and requires John Deere ripper control system. Winch and ripper are easily field interchangeable.
WIRE ROPE CAPACITY	See Carco Service bulletin LIT2435 For more detail on wire rope capacity (including capacity for rope diameters less than maximum).

www.paccarwinch.com

* CONTACT CARCO

1 Maximum theoretical wire rope capacity is per industry standard SAE J1158. NOT RECOMMENDED for actual field use.
2 Maximum recommended wire rope capacity is per industry standard SAE J706 using K=0.9.