

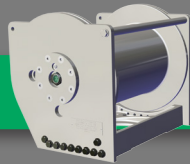
# BRADEN<sup>®</sup>

A PACCAR COMPANY

## PD10-75B/77B Hoist

10,000 lbs (4,536 kg)

### FEATURES & BENEFITS



- Compact base with common bolt pattern to fit new and older cranes
- Roller bearings for more efficient and cooler operation
- API 2C compliant for personnel handling
- Sealed, high-efficiency planetary reduction gearing for continuous-duty performance

### APPLICATIONS

- Offshore Crane



### OPTIONS



<b>Gear ratios</b>	34:1
<b>Unit Weight</b>	540 lb (Dependent on configuration)
<b>Motors</b>	057 (5.74 in <sup>3</sup> ); Gear Motor Also Available
<b>Drum sizes (inches)</b>	75B: 10.63" X 16.50" X 17.65" 77B: 10.63" X 16.50" X 13.50"
<b>Rope diameters</b>	9/16 in
<b>Rope storage</b>	75B: 552 ft (168 m)* 77B: 442 ft (135 m)*
<b>API 2C-compliant</b>	Yes (certified at first 2 layers using 5/8" rope)

*\*Full Rope Capacity requires appropriate aftermarket rope guard.  
Consult factory for additional options.*



[www.paccarwinch.com](http://www.paccarwinch.com)  
800 EAST DALLAS BROKEN ARROW, OK 74012  
TEL (918) 251-8511/FAX (918) 259-1575

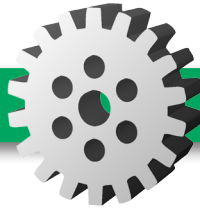
# BRADEN®

A PACCAR COMPANY

## PD10-75B/77B Hoist

10,000 lbs (4,536 kg)

### PERFORMANCE



#### Line Pull (PD10-034057-75B)

	Layer 1	Layer 2	Layer 3	Layer 4**	Layer 5***
<b>Line Pull*</b> lbs (kg)	10,000 lbs (4,536 kg)	9,090 lbs (4,123 kg)	8,330 lbs (3,778 kg)	7,680 lbs (3,484 kg)	7,130 lbs (3,234 kg)
<b>Line Speed*</b> fpm (mpm)	190 fpm (58 mpm)	209 fpm (64 mpm)	228 fpm (70 mpm)	247 fpm (76 mpm)	266 fpm (82 mpm)

\*Based on pressure of 2,391 psi (165 bar), flow of 60 gpm (227 lpm) and 9/16 in (14.29 mm) rope. Performance will vary dependent on hydraulic system, motor, drum and cable sizes.

\*\*Last layer meeting ANSI requirements.

\*\*\*5th Layer requires that appropriate aftermarket rope guard be installed.

### DIMENSIONS

