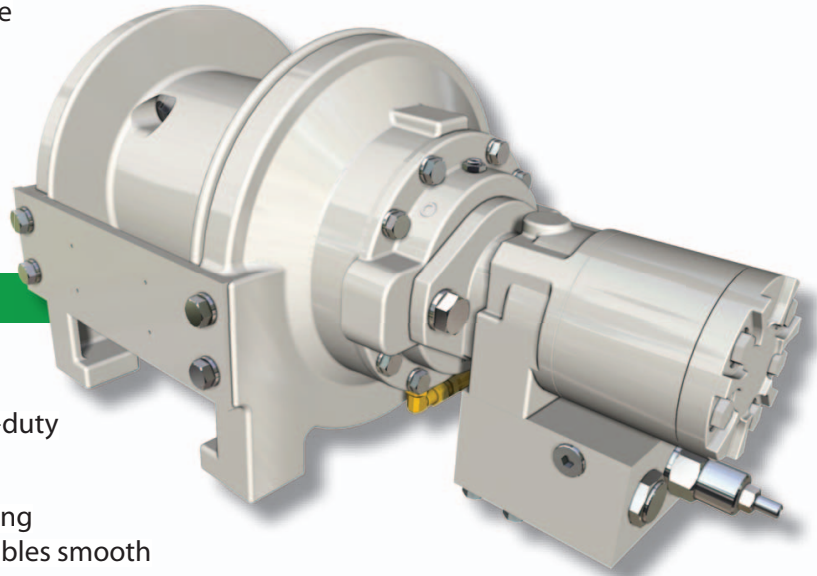


The BRADEN BG3B delivers superior performance in a variety of hoisting applications—from marine installations to service truck and knuckle-boom cranes. The compact and sturdy design provides exceptional power and durability. Low maintenance costs and ease of service make the BRADEN BG3B a smart choice for any job.

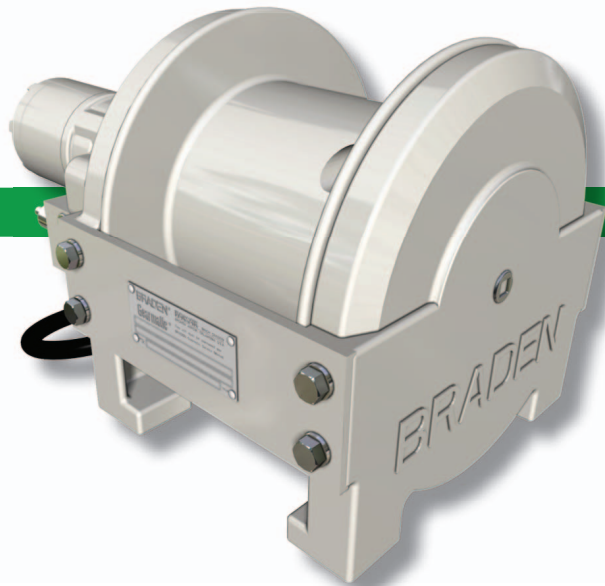
### Features/Benefits

- Sealed, high-efficiency planetary reduction gearing provides continuous-duty performance
- Counterbalance valve for dynamic braking paired with a multi-disc static brake enables smooth operation and fail-safe load handling
- Cable wedge anchor system facilitates rope installation and removal
- Cast ductile iron base and heavy-duty construction ensure secure mounting and unparalleled reliability in tough applications



### Options

- Choose from three gear motors for optimum performance
- High-line pull option for up to 3,800 lb (1,725 kg) in select applications\*\*
- Underwind configuration available for clockwise hoisting
- Tension roller kit available for enhanced productivity



\*\* Requires Braden Engineering application approval

# BG3B PLANETARY HOIST

## 3,000 lb (1,360 kg)



### Performance

#### BG3B-05080-01

<b>MOTOR</b>	080 (8.0 cu in.)	
<b>PRESSURE</b>	2,490 psi	
<b>FLOW</b>	15 gpm	
<b>WIRE ROPE DIA</b>	3/8 in.	
<b>LAYER</b>	<b>LINE PULL (lb)</b>	<b>LINE SPEED (fpm)</b>
1	3,000	140
2	2,700	155
3	2,460	170
4*	2,260	186

\* Layer does not meet ANSI B30.7

<b>MOTOR</b>	080 (131 cc)	
<b>PRESSURE</b>	171 bar	
<b>FLOW</b>	57 lpm	
<b>WIRE ROPE DIA</b>	10 mm	
<b>LAYER</b>	<b>LINE PULL (kg)</b>	<b>LINE SPEED (mpm)</b>
1	1,360	43
2	1,225	47
3	1,115	52
4*	1,025	57

\* Layer does not meet ANSI B30.7

#### BG3B-05100-01

<b>MOTOR</b>	100 (10.0 cu in.)	
<b>PRESSURE</b>	2,000 psi	
<b>FLOW</b>	15 gpm	
<b>WIRE ROPE DIA</b>	3/8 in.	
<b>LAYER</b>	<b>LINE PULL (lb)</b>	<b>LINE SPEED (fpm)</b>
1	3,000	112
2	2,700	124
3	2,460	136
4*	2,260	148

\* Layer does not meet ANSI B30.7

<b>MOTOR</b>	100 (164 cc)	
<b>PRESSURE</b>	138 bar	
<b>FLOW</b>	57 lpm	
<b>WIRE ROPE DIA</b>	10 mm	
<b>LAYER</b>	<b>LINE PULL (kg)</b>	<b>LINE SPEED (mpm)</b>
1	1,360	34
2	1,225	38
3	1,116	41
4*	1,025	45

\* Layer does not meet ANSI B30.7

#### BG3B-05119-01H \*\*

\*\* Requires Braden Engineering application approval

<b>MOTOR</b>	119 (11.9 cu in.)	
<b>PRESSURE</b>	2,120 psi	
<b>FLOW</b>	15 gpm	
<b>WIRE ROPE DIA</b>	3/8 in.	
<b>LAYER</b>	<b>LINE PULL (lb)</b>	<b>LINE SPEED (fpm)</b>
1	3,800	94
2	3,430	104
3	3,120	114
4*	2,860	125

\* Layer does not meet ANSI B30.7

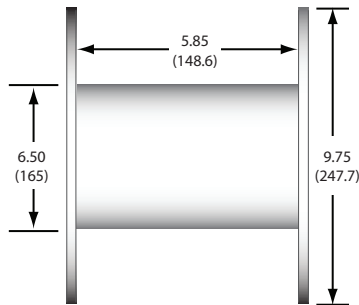
<b>MOTOR</b>	119 (195 cc)	
<b>PRESSURE</b>	146 bar	
<b>FLOW</b>	57 lpm	
<b>WIRE ROPE DIA</b>	10 mm	
<b>LAYER</b>	<b>LINE PULL (kg)</b>	<b>LINE SPEED (mpm)</b>
1	1,725	28
2	1,560	32
3	1,420	35
4*	1,300	38

\* Layer does not meet ANSI B30.7

### Drum Capacity

-01 DRUM

DIMENSIONS IN INCHES (MM)



D/d RATIO IS BASED ON PITCH DIAMETER OF WIRE ROPE AT FIRST LAYER

WIRE ROPE STORAGE, ft

LAYER	1	2	3	4	5	6	D/d
WIRE ROPE DIA	1/4 in.	42	87	135	186	240*	27:1
	3/8 in.	28	59	93	130*	-	18:1

\* Layer does not meet ANSI B30.7

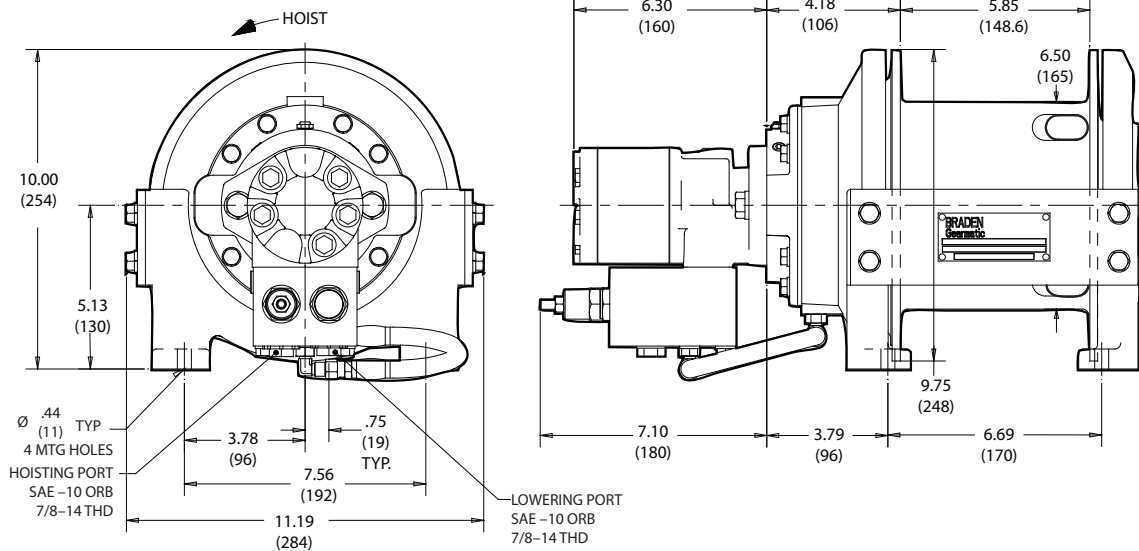
WIRE ROPE STORAGE, m

LAYER	1	2	3	4	5	6	D/d
WIRE ROPE DIA	6 mm	13	27	41	57	73*	27:1
	10 mm	9	18	28	40*	-	18:1

\* Layer does not meet ANSI B30.7

### Dimensions

DIMENSIONS IN INCHES (MM)



# BRADEN®

[www.paccarwinch.com](http://www.paccarwinch.com)

P.O. BOX 547 BROKEN ARROW OK U.S.A. 74013  
TEL (918) 251-8511/FAX (918) 251-8511

LIT2306 R5\_07-2013  
© 2013 PACCAR Inc ALL RIGHTS RESERVED