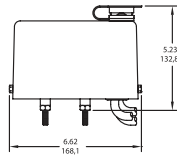
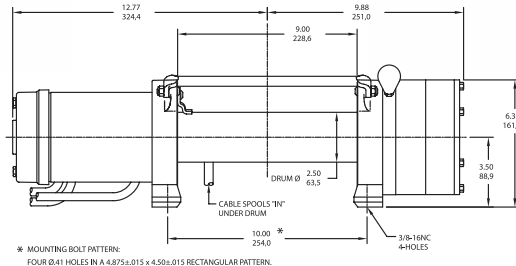


## Patriot Profile 8000



Dimensions are the same for Patriot Profile 8000 and 6000



\* MOUNTING BOLT PATTERN: FOUR Ø.41 HOLES IN A 4.875±.015 x 4.50±.015 RECTANGULAR PATTERN.

## Patriot Profile 6000



Note: Fairlead does not attach directly to winch. Dimensions shown are inches over millimeters.

### Product Features

- Efficient 5.5 HP 12 V DC series wound electric reversible motor for increased pulling power
- Proven three-stage planetary gear system design for fast line speed
- Motor and solenoids are grounded directly to battery
- Strong automatic load-holding brake for strength
- Cam action clutch disengages planetary gear system for free spooling
- Weather resistant solenoid assembly
- The Patriot Profile Series comes with either a 12 ft pendant or the patented (US # 6,995,682) wireless remote
- 6 ft (1,83 m) 2 gauge battery cables with connectors
- 4-way roller fairlead
- Limited lifetime warranty

### Specifications

Rated line pull . . . . .(single line) 8,000 lb (3,620 kg)  
 Gear reduction ratio . . . . .126:1 (12V)  
 Motor . . . . .Series wound - 5.5 hp 12V DC  
 Overall dimensions . . . . .(LxWxH) 22.65" x 6.62" x 6.10"  
 (575.4 mm x 168.1 mm x 154.9 mm)  
 Drum size . . . . .Diameter 2.5" (63 mm) Length 9" (228 mm)  
 Weight . . . . .75 lb (34 kg)  
 Cable supplied . . . . .95 ft (29 m) of 5/16" (8 mm) galvanized aircraft cable with replaceable clevis hook with safety latch  
 Mounting bolt pattern . . . . .10.00 ± .015 in. x 4.50 ± .015 in.  
 (254,0 mm x 114,3 mm)

#### Line Speed and Amp Draw - First Layer

Line Pull	lb	no	2,000	4,000	6,000	8,000	
	kg	load	900	1,810	2,720	3,620	
Line Speed	fpm	35	18	13	10	8	
	mpm	10.6	5.5	3.9	3.0	2.4	
Motor Current	amps	12V	95	210	270	355	420

#### Line Pull and Cable Capacity

Layer of Cable		1	2	3	4
Rated Line Pull per Layer	lb	8,000	6,550	5,540	4,800
	kg	3,629	2,971	2,513	2,177
Cable Capacity per Layer	ft	15	40	70	95
	m	4	12	21	28

- Patriot Profile 8000 R 12V with 12 ft pendant . . . . . **Part# 109163**  
 Patriot Profile 8000 R 12V with wireless remote . . . . . **Part# 109164**  
 Patriot Profile 8000 R 24V with 12 ft pendant . . . . . **Part# 109174**  
 Patriot Profile 8000 R 12V CE with 12 ft pendant . . . . . **Part# 109179**  
 R - 4-way roller fairlead

### Specifications

Rated line pull . . . . .(single line) 6,000 lb (2,720 kg)  
 Gear reduction ratio . . . . .90:1 (12V)  
 Motor . . . . .Series wound - 5.5 hp 12V DC  
 Overall dimensions . . . . .(LxWxH) 22.65" x 6.62" x 6.10"  
 (575.4 mm x 168.1 mm x 154.9 mm)  
 Drum size . . . . .Diameter 2.5" (63 mm) Length 9" (228 mm)  
 Weight . . . . .65 lb (29.5 kg)  
 Cable supplied . . . . .100 ft (30.5 m) of 1/4" (6 mm) galvanized aircraft cable with replaceable clevis hook with safety latch  
 Mounting bolt pattern . . . . .10.00 ± .015 in. x 4.50 ± .015 in.  
 (254,0 mm x 114,3 mm)

#### Line Speed and Amp Draw - First Layer

Line Pull	lb	no	1,000	3,000	5,000	6,000	
	kg	load	450	1,350	2,260	2,720	
Line Speed	fpm	45	23	20	14	12	
	mpm	13.7	7.0	6.1	4.3	3.6	
Motor Current	amps	12V	100	200	270	350	405

#### Line Pull and Cable Capacity

Layer of Cable		1	2	3	4
Rated Line Pull per Layer	lb	6,000	5,075	4,400	3,880
	kg	2,722	2,302	1,996	1,760
Cable Capacity per Layer	ft	20	50	80	100
	m	6	15	24	30

- Patriot Profile 6000 R 12V with 12 ft pendant . . . . . **Part# 109161**  
 Patriot Profile 6000 R 12V with wireless remote . . . . . **Part# 109162**  
 Patriot Profile 6000 R 24V with 12 ft pendant . . . . . **Part# 109173**  
 Patriot Profile 6000 R 12V CE with 12 ft pendant . . . . . **Part# 109178**  
 R - 4-way roller fairlead