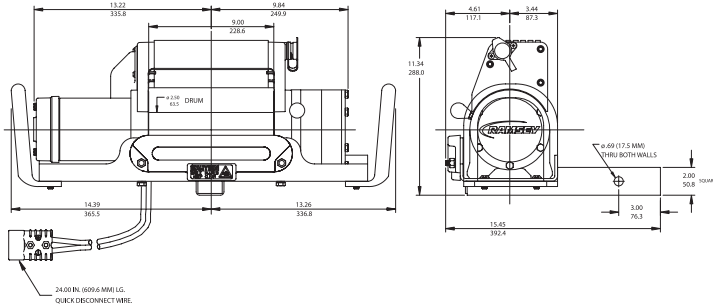
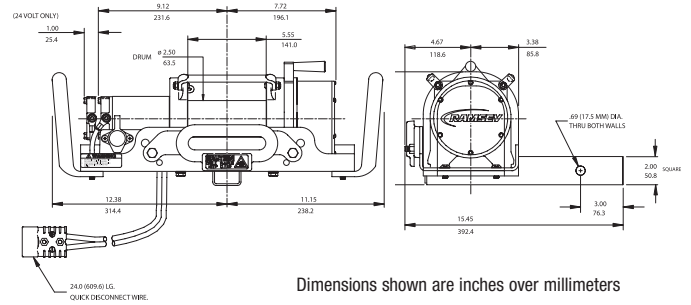


## QM 8000



## QM 5000



Dimensions shown are inches over millimeters

### Product Features

- Used with a class-three rear receiver hitch with 5,000 lb minimum weight carrying (WC) rating (Receiver must not be recessed more than 1 1/4" from bumper face)\*
- Proven three-stage planetary gear system design for fast line speed
- Strong automatic load-holding brake for strength
- Cam action clutch disengages planetary gear system for free spooling
- Weather resistant fully integrated solenoid assembly
- 12 ft pendant
- Anti-theft locking pin
- Hawse fairlead
- Limited lifetime warranty

\*All products in the QM Series will front mount into QM Front Receivers from Ramsey Winch.

### Specifications

Rated line pull . . . . . (single line) 8,000 lb (3,620 kg)  
 Gear reduction ratio . . . . . 126:1 (12V)  
 Motor . . . . . Series wound - 5.5 hp 12V DC  
 Overall dimensions. . . . . (LxWxH) 27.77" x 14.38" x 11.14"  
 (705 mm x 365 mm x 283 mm)  
 Drum size. . . . . Diameter 2.5" (63 mm) Length 9" (228 mm)  
 Weight . . . . . 107 lb (48.5 kg)  
 Cable supplied . . . . . 95 ft (29 m) of 5/16" (8 mm) galvanized aircraft cable with replaceable clevis hook with safety latch

### Line Speed and Amp Draw - First Layer

Line Pull	lb	no	2,000	4,000	6,000	8,000	
	kg	load	900	1,810	2,720	3,620	
Line Speed	fpm	35	18	13	10	8	
	mpm	10.6	5.5	3.9	3.0	2.4	
Motor Current	amps	12V	95	210	270	355	420

### Line Pull and Cable Capacity

Layer of Cable		1	2	3	4
Rated Line Pull per Layer	lb	8,000	6,550	5,540	4,800
	kg	3,629	2,971	2,513	2,177
Cable Capacity per Layer	ft	15	40	70	95
	m	4	12	21	28

QM 8000 12V. . . . . **Part# 111039**

- QM 8000/9000 must be used with a class-three rear receiver hitch, or equivalent, with 5,000 lb minimum weight carrying (WC) rating. Receiver must not be recessed more than 1 1/4" from bumper face.

### Specifications

Rated line pull . . . . . (single line) 5,000 lb (2,260 kg)  
 Gear reduction ratio . . . . . 294:1 (12V) - 210:1 (24V)  
 Motor . . . . . Permanent magnet - 1.3 hp (12V) - 1.9 hp (24V) DC  
 Overall dimensions. . . . . (LxWxH) 23.53" x 14.38" x 8.00"  
 (598 mm x 365 mm x 203 mm)  
 Drum size. . . . . Diameter 2.5" (63 mm) Length 5.5" (139 mm)  
 Weight . . . . . 74 lb (33.6 kg)  
 Cable supplied . . . . . 80 ft (24 m) of 1/4" (6 mm) galvanized aircraft cable with replaceable clevis hook with safety latch

Note: 24V models have different dimensions. Consult factory.

### Line Speed and Amp Draw - First Layer

Line Pull	lb	no	1,000	3,000	5,000	
	kg	load	450	1,360	2,260	
Line Speed	fpm	12V	15	11	8	5
		24V	20	17	12	8
	mpm	12V	4.5	3.3	2.4	1.5
		24V	6	5.1	3.6	2.4
Motor Current	amps	12V	45	100	155	230
		24V	20	50	105	160

### Line Pull and Cable Capacity

Layer of Cable		1	2	3	4
Rated Line Pull per Layer	lb	5,000	4,200	3,600	3,200
	kg	2,260	1,900	1,630	1,450
Cable Capacity per Layer	ft	15	30	55	80
	m	4.5	9	17	24

QM 5000 12V. . . . . **Part# 111107**  
 QM 5000 24V. . . . . **Part# 111108**

- QM 5000 will mount into any standard class-three rear receiver hitch. Receiver must not be recessed more than 1 1/4" from bumper face.