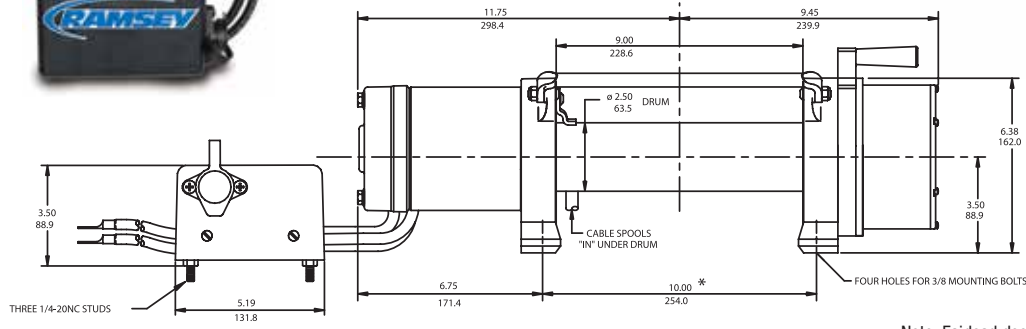
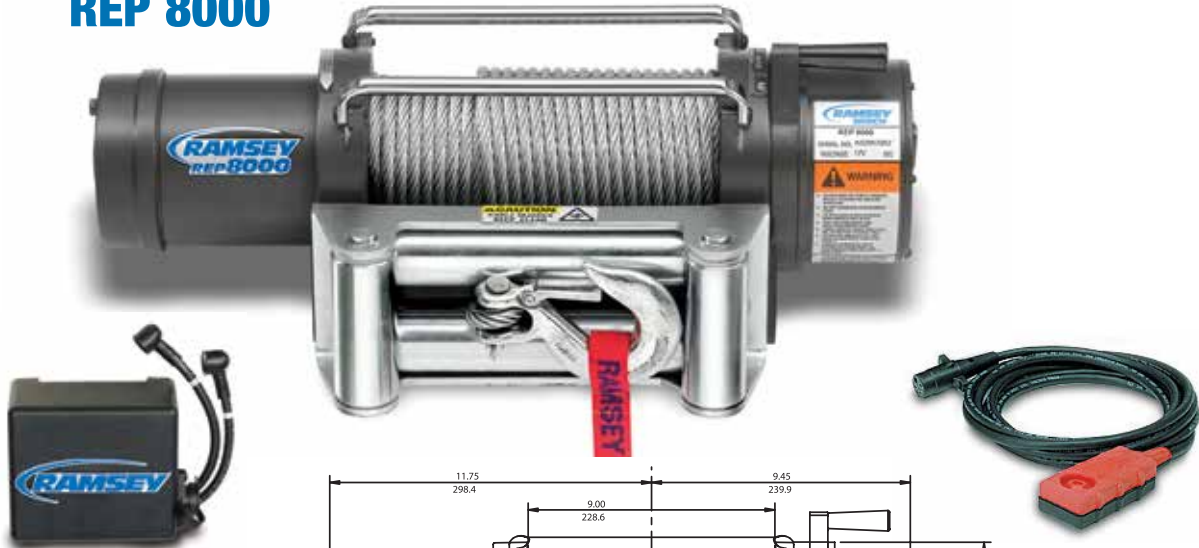


REP 8000



* MOUNTING BOLT PATTERN: FOUR ϕ .41 HOLES IN A 10.00±.015 x 4.50±.015 (254.0mm x 114.3mm) RECTANGULAR PATTERN

Note: Fairlead does not attach directly to winch. Dimensions shown are inches over millimeters.

Product Features

- Proven three-stage planetary gear system design for fast line speed
- Motor and solenoids are grounded directly to battery
- Strong automatic load-holding brake for strength
- Cam action clutch disengages planetary gear system for free spooling
- Weather resistant solenoid assembly
- 12 ft pendant
- 6 ft (1,83 m) 2 gauge battery cables with connectors
- 4-way roller fairlead
- Limited lifetime warranty

Specifications

Rated line pull (single line) 8,000 lb (3,620 kg)
 Gear reduction ratio 126:1 (12V)
 Motor Series wound 3.8 hp (12V)
 Overall dimensions (LxWxH) 21.38" x 6.00" x 6.38"
 (530 mm x 152 mm x 162 mm)
 Drum size Diameter 2.5" (63 mm) Length 9" (228 mm)
 Weight 75 lb (34 kg)
 Cable supplied 95 ft (29 m) of 5/16" (8 mm) galvanized aircraft cable with replaceable clevis hook with safety latch
 Mounting bolt pattern 10.00 ± .015 in. x 4.50 ± .015 in. (254,0 mm x 114,3 mm)

Line Speed and Amp Draw – First Layer

Line Pull	lb	no load	2,000	4,000	6,000	8,000	
Line Speed	fpm	12V	36	15	12	8	5
	mpm	12V	11.0	4.6	3.7	2.4	1.5
Motor	amps	12V	87	168	258	320	405

Line Pull and Cable Capacity

Layer of Cable	1	2	3	4	
Rated Line Pull per Layer	lb	8,000	6,500	5,500	4,800
	kg	3,620	2,940	2,490	2,170
Cable Capacity per Layer	ft	15	40	70	95
	m	4	12	21	28

REP 8000 H 12V **Part# 111035**
 REP 8000 R 12V **Part# 111036**
 REP 8000 R 12V CE **Part# 111071**
 R - 4-way roller fairlead H - Hawse fairlead