

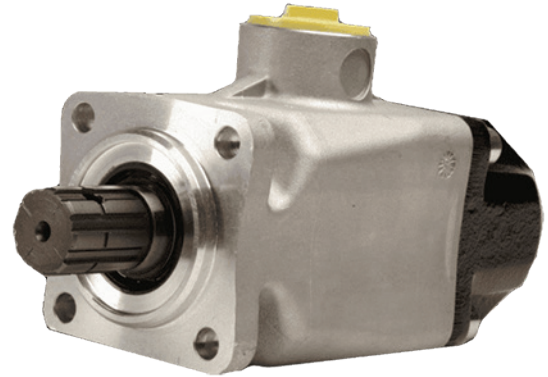
Q SERIES

PISTON PUMPS



A fixed displacement in-line piston pump

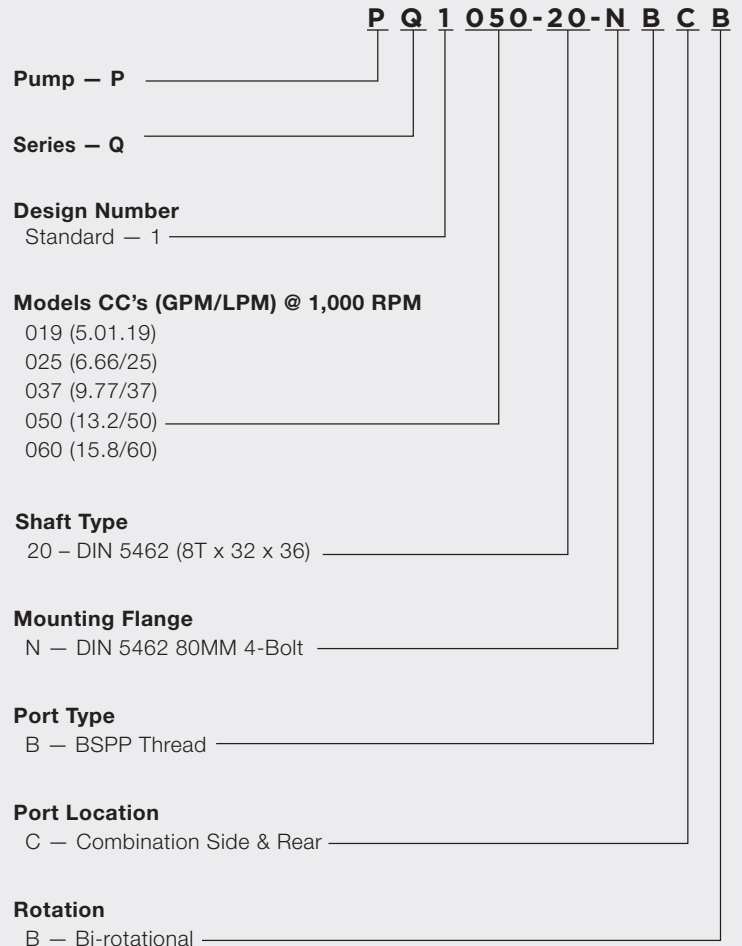
Ultimate power and performance in a small package best describes the fixed displacement Q Series Piston Pumps. The Q Series is designed exclusively for high pressure applications. It's high efficiency and rugged design provides for high performance and extra long life.



KEY FEATURES

- Five standard sizes 5-15 GPM (19-60 LPM)
- Pressures to 5,075 PSI (350 BAR) continuous duty
- Speeds to 1,800 RPM
- Bi-rotational operation
- Double shaft seals
- Air bleed screw standard
- DIN 5462 4-Bolt shaft and flange
- BSPP straight thread ports
- Proven European design
- Full one-year warranty
- Complimentary mounts are available on most Muncie Power PTO series

MODEL NUMBER CONSTRUCTION

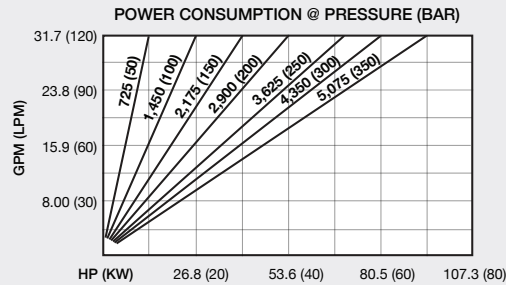
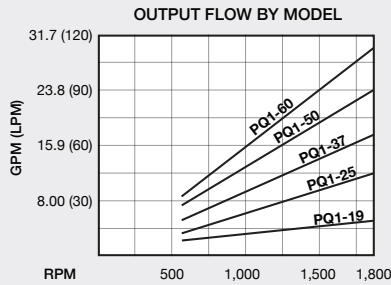


PISTON PUMP SPECIFICATIONS

MODEL NO.	DISPLACEMENT CU IN (CC)	MAX RPM	MIN RPM	MAX PSI (BAR)	MAX OIL TEMPERATURE	MAX INLET VACUUM	APPROX. WEIGHT LBS. (KG)
PQ1-019	1.16 (19)	1,800	600	5,075 (350)	180°F (82°C)	6 in.Hg. (.20 BAR)	23.2 (10.5)
PQ1-025	1.52 (25)	1,800	600	5,075 (350)	180°F (82°C)	6 in.Hg. (.20 BAR)	23.2 (10.5)
PQ1-037	2.25 (37)	1,800	600	5,075 (350)	180°F (82°C)	6 in.Hg. (.20 BAR)	23.2 (10.5)
PQ1-050	3.05 (50)	1,800	600	5,075 (350)	180°F (82°C)	6 in.Hg. (.20 BAR)	23.2 (10.5)
PQ1-060	3.66 (60)	1,700	600	4,350 (300)	180°F (82°C)	6 in.Hg. (.20 BAR)	23.2 (10.5)

Inlet Ports: 1 1/4" Female BSPP **Outlet Ports** 1" Female BSPP **Note:** 10 Micron return line filtrations recommended.
Recommended Oil Viscosity: Cold climate 22 cSt, Medium climate 37 cSt; Hot climate 46 cSt

PUMP PERFORMANCE



OPTIONAL FITTINGS

Optional low pressure and high pressure fittings provided for easy connection to typical North American hoses and thread types.

MODEL NO.	DESCRIPTION	MODEL NO.	DESCRIPTION
R4BP45-32-20	2" hose barb, 45°, to 1 1/4" male BSPP, swivel	BP-MJ-16-12P	1" male BSPP, to -12 male JIC
R4BP90-32-20	2" hose barb, 90°, to 1 1/4" male BSPP, swivel	BP-MJ-16-16P	1" male BSPP, to -16 male JIC
HC-32-HD	Heavy duty 2" hose clamp	BP-MJ45-16-16P	1" male BSPP, 45°, to -16 male JIC
BP-MJ-20-20P	1 1/4" male BSPP, to -20 male JIC	BP-MJ90-16-16P	1" male BSPP, 90°, to -16 male JIC
BP-MJ90-20-20P	1 1/4" male BSPP, 90°, to -20 male JIC		

MOUNTING DIMENSIONS

