



TECHNICAL SPECIFICATIONS



PT6E SERIES

Large displacement vane pump



PUMP OPERATING CHARACTERISTICS CHART

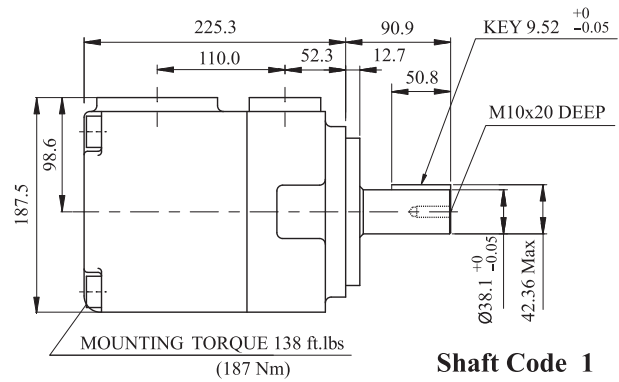
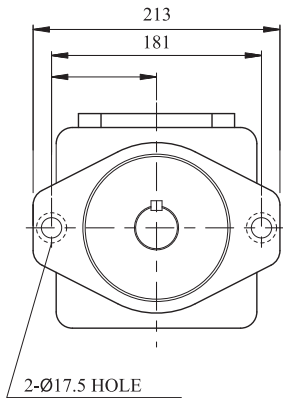
	Cam Ring								
	042	045	050	052	062	066	072	085	
GPM @ 1200 RPM <i>0 PSI</i>	42	45	50	62	62	66	72	85	
GPM @ 1000 RPM <i>3500 PSI</i>	30.43	33.1	37.35	47.45	47.45	51.83	55.48	70.03*	
LPM @ 1000 RPM <i>241 BAR</i>	115.2	125.3	141.4	179.6	179.6	196.2	210	265.1*	
IN³	8.07	8.69	9.67	12	12	13.02	13.86	16.46	
CC	132.3	142.4	158.5	196.7	196.7	213.3	227.1	269.8	
Max PSI	3500							1450	
Continuous PSI	3000							1090	
MAX RPM	2200							2000	
MIN RPM	600/400								

*Performance stated at Max RPM and Max PSI for given cam ring.

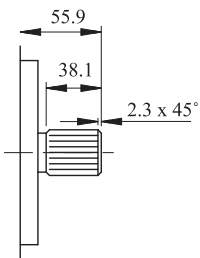
SPECIFICATIONS

Series	Type	Frame Size	Displacement	Max RPM	GPM @ 1000RPM	Max PSI
PT6E	Vane	Large	8.07-16.46	2200	42-85	3500

DIMENSIONAL DATA

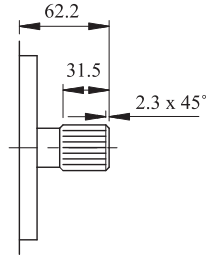


Shaft Code 1
(Keyed SAE CC)



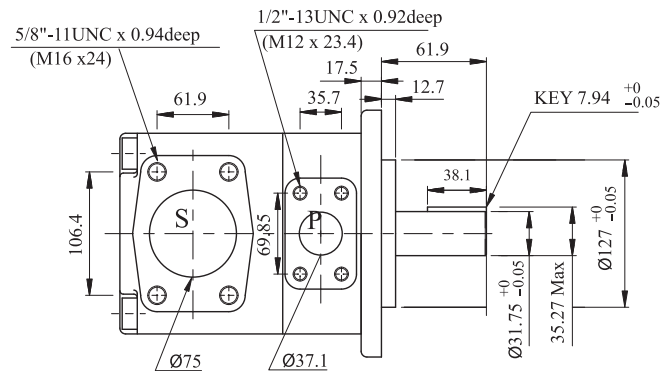
Shaft code 3

SAE C Splined shaft
class 1 - J498b
12/24 dp. -14 teeth 30°
pressure angle. Flat root
side fit.



Shaft code 4

SAE CC Splined shaft
class 1 - J498b 12/24
dp. -17 teeth 30°
pressure angle. Flat root
side fit.



Shaft Code 2
(Keyed no SAE)

Shaft torque limits in ³ /rev x psi (cm ³ /rev x bar)		
Pump	Shaft	Vp x p max
PT6E	1	48273 (54555)
	2	30638 (34590)
	3	54207 (61200)
	4	54207 (61200)
	T	62356 (70400)

DISCLAIMER Consult your Permco Representative or the factory for operation below 600 or above 2400 RPM and temperatures above 180° F. Consult Permco for all pressure applications over 4350 PSI. Oil Viscosity: 150 SUS (32.1 cSt.) at 100° F (37.8° C) | Oil Temperature: 150° F (65.5° C)



1500 Frost Road P.O. Box 2068
Streetsboro, Ohio 44241
Phone 330.626.2801 • Fax 330.626.2805

support@permco.com • www.permco.com
twitter: @permco
facebook: www.facebook.com/permco