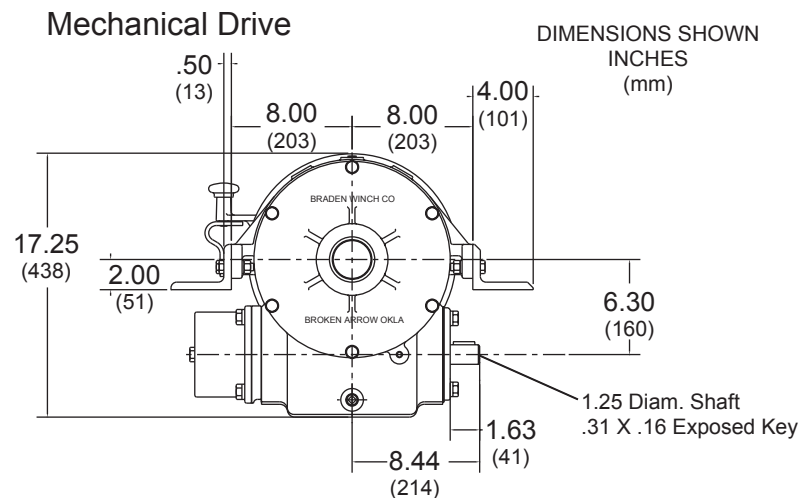
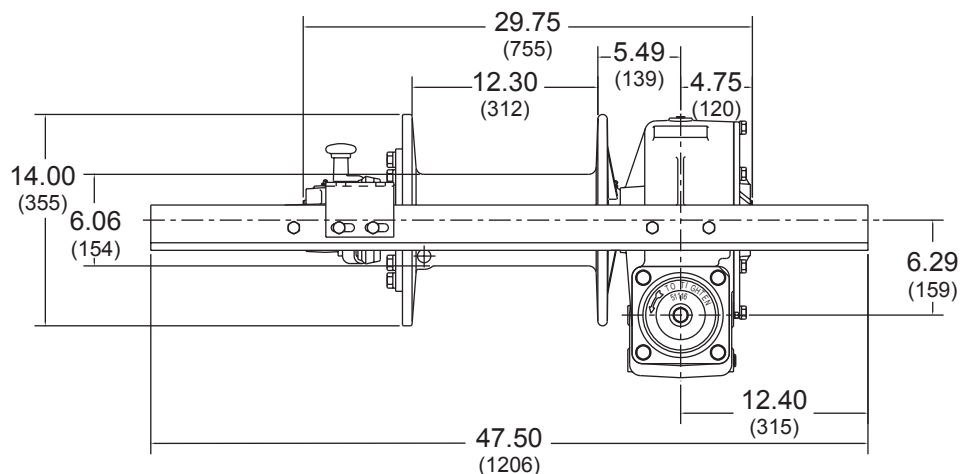


AHSU12P / AMSU12

35,000 LB First Layer Line Pull



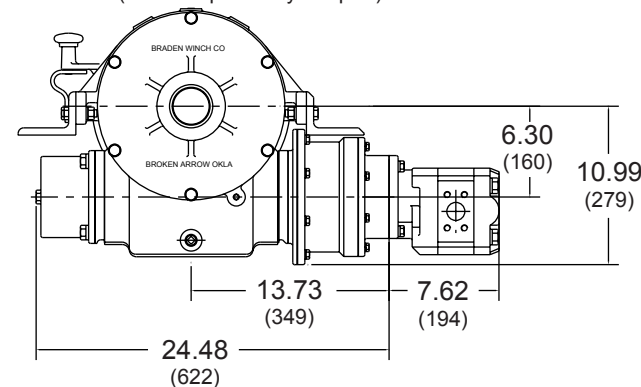
DIMENSIONAL INFORMATION



PERFORMANCE INFORMATION

- Rated in compliance with SAE Specification J706.
- Oil-cooled, fully adjustable automatic safety brake.
- Large capacity ductile iron cable drum with a bolted clutch plate.
- Ground and polished, heat treated alloy steel drum shaft.
- Sliding drum clutch has negative draft jaws for positive engagement.
- Automatic drag brake helps prevent drum from over running when pulling wire rope off by hand.

Hydraulic Drive - (includes planetary adapter)



3/4 in. WIRE ROPE

LAYER	LINE PULL		LINE SPEED		ROPE CAPACITY 12 in. Drum	
	(lbs)	(kg)	(fpm)	(mpm)	(ft)	(m)
1	35,000	15,900	15	5	26	8
2	28,600	13,000	18	6	60	18
3	24,200	11,000	22	7	100	30
4	21,000	9,530	25	8	140	42
5	18,500	8,390	28	9	190	58

HYDRAULIC REQUIREMENTS:

Δ PSI	(Δ bar)	@	gpm	(lpm)
2,300	(159)		50	(189)

MECHANICAL REQUIREMENTS*:

Static Input Torque	Dynamic Input Torque	Max Input
lb-in	N-m	RPM
9,370	(1,060)	280

*Without Planetary Motor Adapter

PACCAR WINCH DIVISION

P.O. BOX 547 BROKEN ARROW, OK U.S.A. 74013
PHONE (918) 251-8511 FAX (918) 259-1575

www.paccarwinch.com

COMMITMENT

Every process in the design, manufacture and support of BRADEN products is focused on one goal: Providing the highest quality winch, hoist and drive systems in the world.

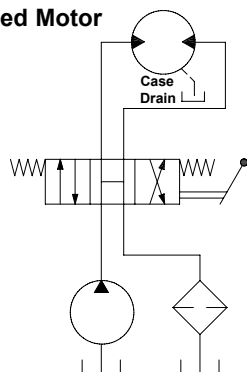
PACCAR Winch Division is committed to providing the best in product design, durability and reliability. BRADEN products are supported with comprehensive publications, factory service representatives and a world wide distribution network.

Since 1905 PACCAR Inc has provided high quality products and services to numerous markets and countries. Let us put our experience and expertise to work for you.

www.paccarwinch.com

HYDRAULIC CIRCUIT

Single Speed Motor



PERFORMANCE FORMULAS

LINE PULL AT LOWER PRESSURE

$$\frac{\text{YOUR SYSTEM PRESSURE}}{\text{MAXIMUM PRESSURE (FROM CHART)}} \times \text{LINE PULL FROM CHART} = \text{LINE PULL ESTIMATE}$$

EXAMPLE:

$$\frac{1000 \text{ PSI}}{2300 \text{ PSI}} \times 35,000 \text{ LBS} = 15,217 \text{ LBS}$$

WIRE ROPE CAPACITY

ROPE SIZE	LAYER													
	1		2		3		4		5		6		7	
in.	ft	(m)	ft	(m)	ft	(m)	ft	(m)	ft	(m)	ft	(m)	ft	(m)
3/4	26	(7.9)	60	(18.3)	100	(30.5)	140	(42.6)	190	(57.9)				
5/8*	31	(9.4)	67	(20.4)	110	(33.5)	160	(48.8)	210	(64.1)	270	(82.3)		
9/16**	34	(10.4)	74	(22.5)	120	(36.6)	170	(51.8)	230	(70.1)	290	(88.4)	360	(109.7)

* Not recommended for loads over 21,000 lbs (9525 kg)

** Not recommended for loads over 17,000 lbs (7711 kg)

ENGINEERING DATA

Rated Working Load (Max. Load, First Layer).....	35,000 lbs. (15876 kg)
Breaking Strength (First Layer).....	70,000 lbs. (31752 kg)
Worm Gear Ratio.....	33:1
Drum Shaft Diameter.....	2 5/8 in. (67 mm)
Drum Barrel Diameter.....	6 in. (152 mm)
Maximum Input RPM @ Rated Load*.....	280
Starting Input Torque (Static)*.....	9,370 lb-in (1059 N-m)
Input Torque To Operate Winch (Dynamic)*.....	7,145 lb-in (807 N-m)
Continuous Duty Rating.....	43,000 ft-lbs/min. (58308 N-m/min.)
Planetary Reduction Gear Ratio.....	7.75:1
Weight - Mechanical Winch.....	490 lbs. (222 kg)

* Without Planetary Motor Adapter

NOTES

⚠ WARNING ⚠

The products described herein are neither designed nor intended for use or application to equipment used in lifting or moving of persons.

⚠ WARNING ⚠

A minimum of 5 wraps of wire rope must be left on the drum to prevent the load from being supported by the wire rope anchor alone. Since the wire rope anchor is not designed to hold the rated load, failure to leave 5 wraps of wire rope on the drum could cause the load to drop, which could result in property damage, personal injury or death.

Specifications are subject to change without notification and without incurring obligation.

Pressure and flow shown are the maximum allowable for the particular combination of winch, ratio, motor and drum.

Specifications in this publication are theoretical and may vary depending on hydraulic system, environment, etc.

Line pulls are maximum ratings for the winch only.

Wire rope ratings may be lower than the the winch rating.

Consult the wire rope manufacturer for ratings.