

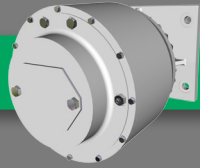
BRADEN[®]

A PACCAR COMPANY

LB Series Drives

40,000 lb-ft (54,233 N·m) to
140,000 lb-ft (189,815 N·m)

FEATURES & BENEFITS



- Lloyd's Register approved
- Triple (LB400) and quadruple (LB1400) planetary design with bearings throughout
- Multiple reduction ratios to match application needs
- Optional input drive adapters available
- Simple design for ease of maintenance
- Torque-tube mount with spherical output bearing for pinion shaft support
- Complies with US Coast Guard regulations

APPLICATIONS



- Offshore Liftboats

SPECS & PERFORMANCE



Model	Part Number	Intermittent Output Torque lb-ft (N·m)	Gear Ratio	Motor Input Options
LB400C	05978	40,000 (54,233)	102.2:1	SAE 'C' 14-tooth spline
	05979	40,000 (54,233)	156.9:1	SAE 'C' 14-tooth spline
LB1400B	04462	140,000 (189,815)	1,040.6:1	SAE 'C' 14-tooth spline

www.paccarwinch.com
800 EAST DALLAS BROKEN ARROW, OK 74012
TEL (918) 251-8511/FAX (918) 259-1575

BRADEN[®]

A **PACCAR** COMPANY

LB Series Drives

40,000 lb-ft (54,233 N·m) to
140,000 lb-ft (189,815 N·m)

DIMENSIONS

